

BUILDING

TRUST WITH

EXCELLENCE



SANJEEVINI GROUP™

Trust of Happiness

ಸಂಜೀವಿನಿ ಗ್ರೂಪ್

www.sanjeevinigroups.com

THE SANJEEVINI GROUP

The Sanjeevini Group has made its mark as one of the prominent builders and developers in Whitefield, Bangalore. Throughout our journey, our commitment to our core values has made us an ideal building partner for Bangalore's most forwardthinking populous. Started in 2010, Sanjeevini Builders continues to be a trusted name in the commercial, residential and hospitality sectors, with an extensive portfolio of projects throughout Bangalore, with its core cluster in and around Whitefield.



REASONS YOU SHOULD INVEST WITH SANJEEVINI GROUP

- On time delivery of all projects ■
- All projects are strategically located ■
- Unmatched quality of construction ■
- Multiple investment option to choose from ■
- Easy resale considering 100% vastu compliance ■

This is for internal discussion and can't be used for marketing or sales purposes

OUR VISION

Strive to achieve recognition as one of the best developers in Bangalore.

OUR MISSION

Our modus operandi lies in our ability to innovate, based on a customer-devoted approach and feedback. We ensure that our clients get truly international quality and amenities in a natural eco-friendly environment. Beyond the accolades, we believe your satisfaction and approval to be our unprecedented treasures.

OUR CORE VALUE



Environmental
Sustainability



Social
Responsibility



Corporate
Governance

This is for internal discussion and can't be used for marketing or sales purposes

THE SANJEEVINI GROUP

Has a New Addition

LAUNCHING

Codename **5A's**

Spread across 8.5 acres with 80% beautifully landscaped open spaces, 5A's offers 670 Ultra Luxury apartments designed to provide an unparalleled living experience. With state of art amenities, approx 45000+ sqft centralised clubhouse, vastu compliance units and with unique concept of layout to have maximum sunlight and ventilation. It's truly a one-of-a-kind in Gunjur and surrounding area.

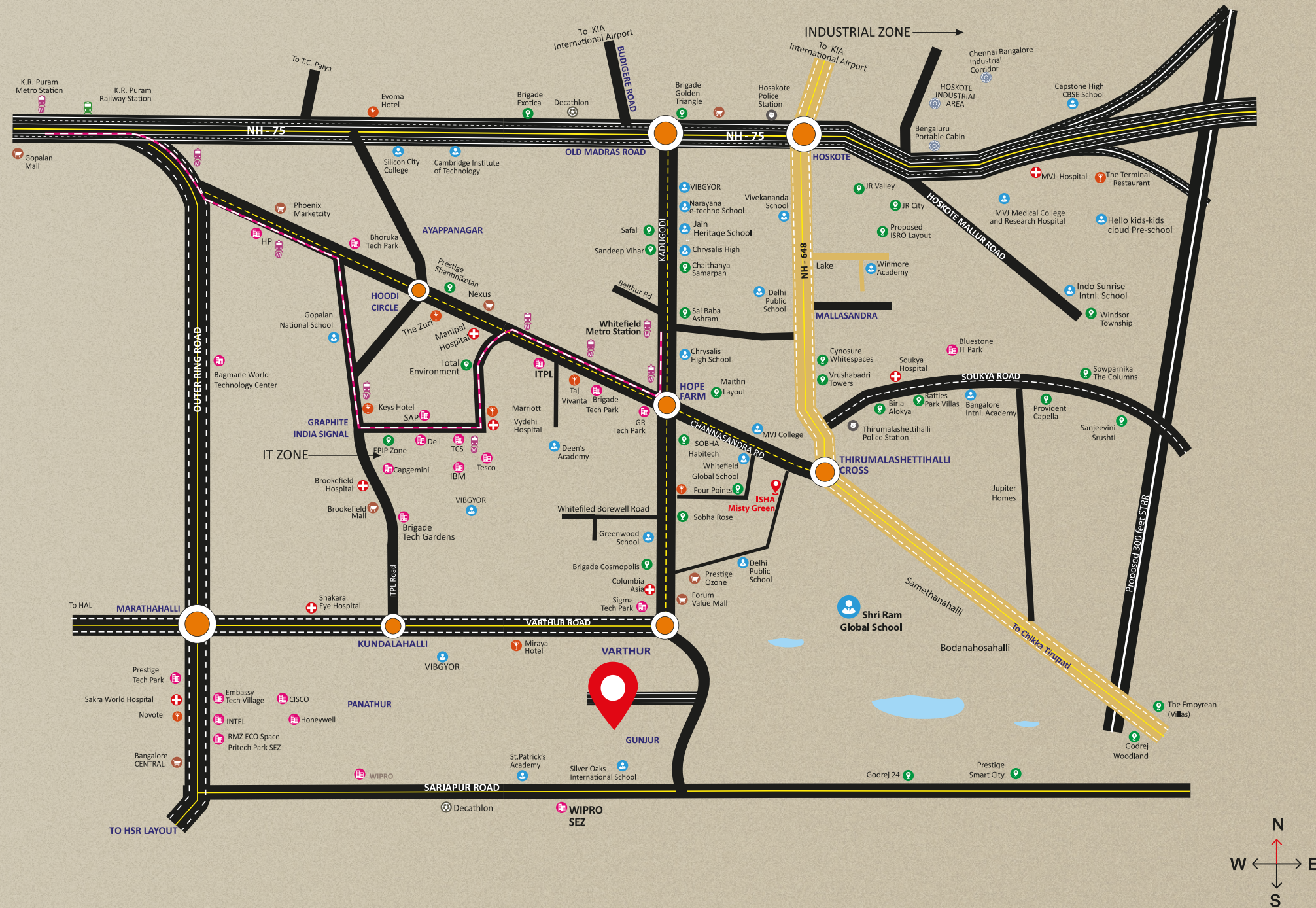
The towers are thoughtfully designed with keeping sun orientation, ensuring residents enjoy the best of natural light and ventilation year-round.

Whether you seek luxury, space, or convenience, 5A's is where your dream home awaits. Stay tuned for the official launch and be a part of this prestigious community!

This is for internal discussion and can't be used for marketing or sales purposes



This is for internal discussion and can't be used for marketing or sales purposes



This is for internal discussion and can't be used for marketing or sales purposes

5 A's

A LOCATION THAT OFFERS ALL CONVENIENCES,
COMFORT & MORE TIME FOR YOUR FAMILY.

Proposed location
can cover



20+ Tech
Parks
(45 min. Ride)



10+ International
Schools
(30 min. Ride)



5+ Shopping
Malls
(30 min. Ride)



4+ Hospitals
(30 min. Ride)

This is for internal discussion and can't be used for marketing or sales purposes

KEY FEATURES

- Proposed IGBC GOLD Certified project
- Proposed water storage and bore recharge system
- Partial Home automation for each room
- Each flat equipped with Japanese No1 AC Brand- VRF
- approx 10.6 feet floor to ceiling height
- 8 Feet height Main door with digital lock
- International sanitary brand with thermostat
- French windows with 70% openable option
- 1200 * 1200 mm premium tiles flooring
- Fenesta/ Saint Gobain UPVC
- 5 lifts in each tower for smooth daily operation
- 50,000 sqft G+6 clubhouse with ultra premium amenities
- 20+ Premium indoor amenities
- 25+ Premium outdoor amenities
- No common walls
- 100% vastu units
- 80% green open space

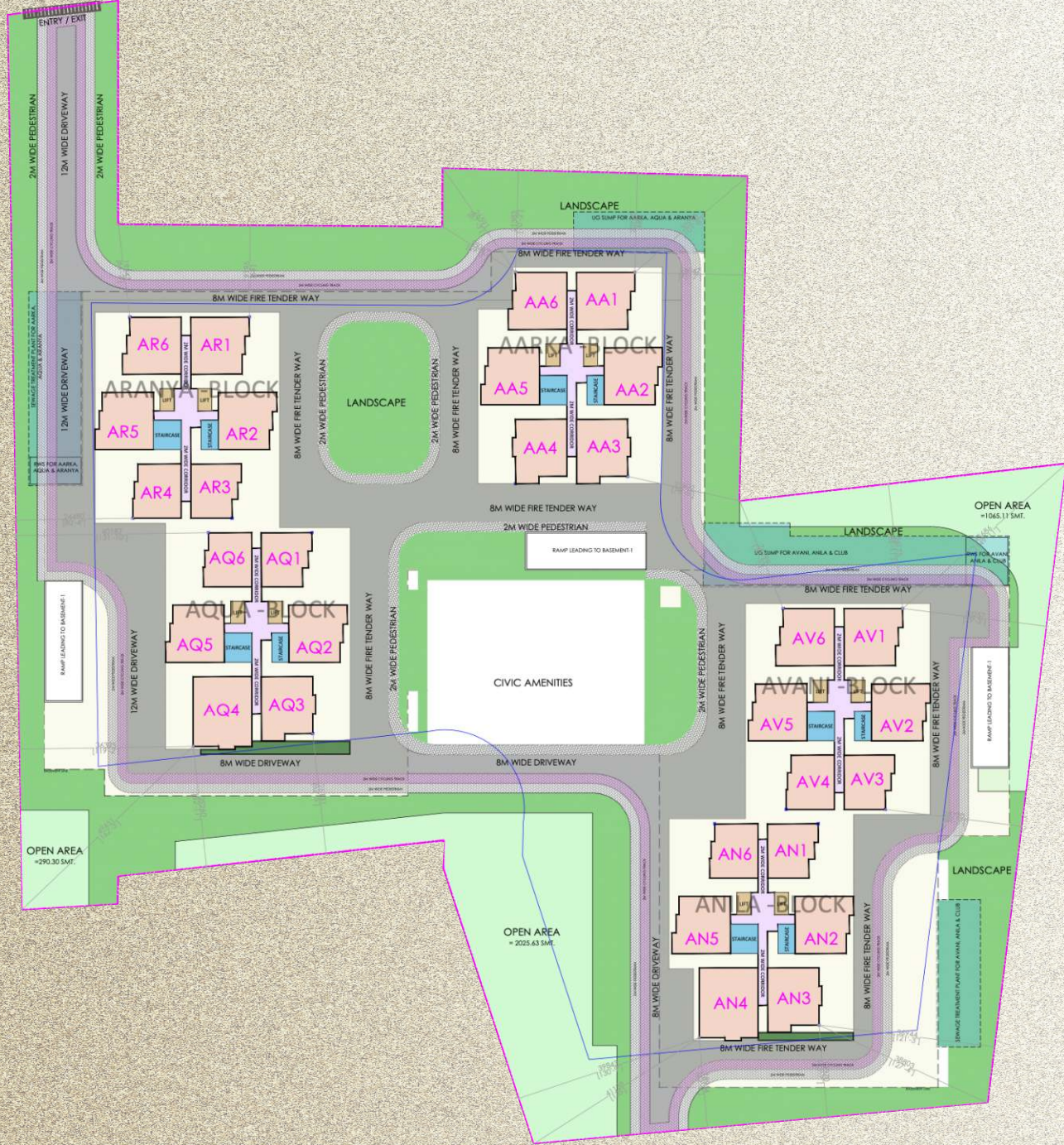
This is for internal discussion and can't be used for marketing or sales purposes

- **TOTAL LAND AREA**
8.5 Acres
- **NO. OF TOWERS**
5 Towers
- **BUILDING AREA**
15-20% coverage
- **APPROX CLUB HOUSE AREA**
80% Open space
- **OPEN AREA**
50000+ sqft
- **TENTATIVE LAUNCH**
January 2025
- **TENTATIVE HANDOVER**
December 2027
- **TENTATIVE LAUNCH PRICE**
10500 + GST



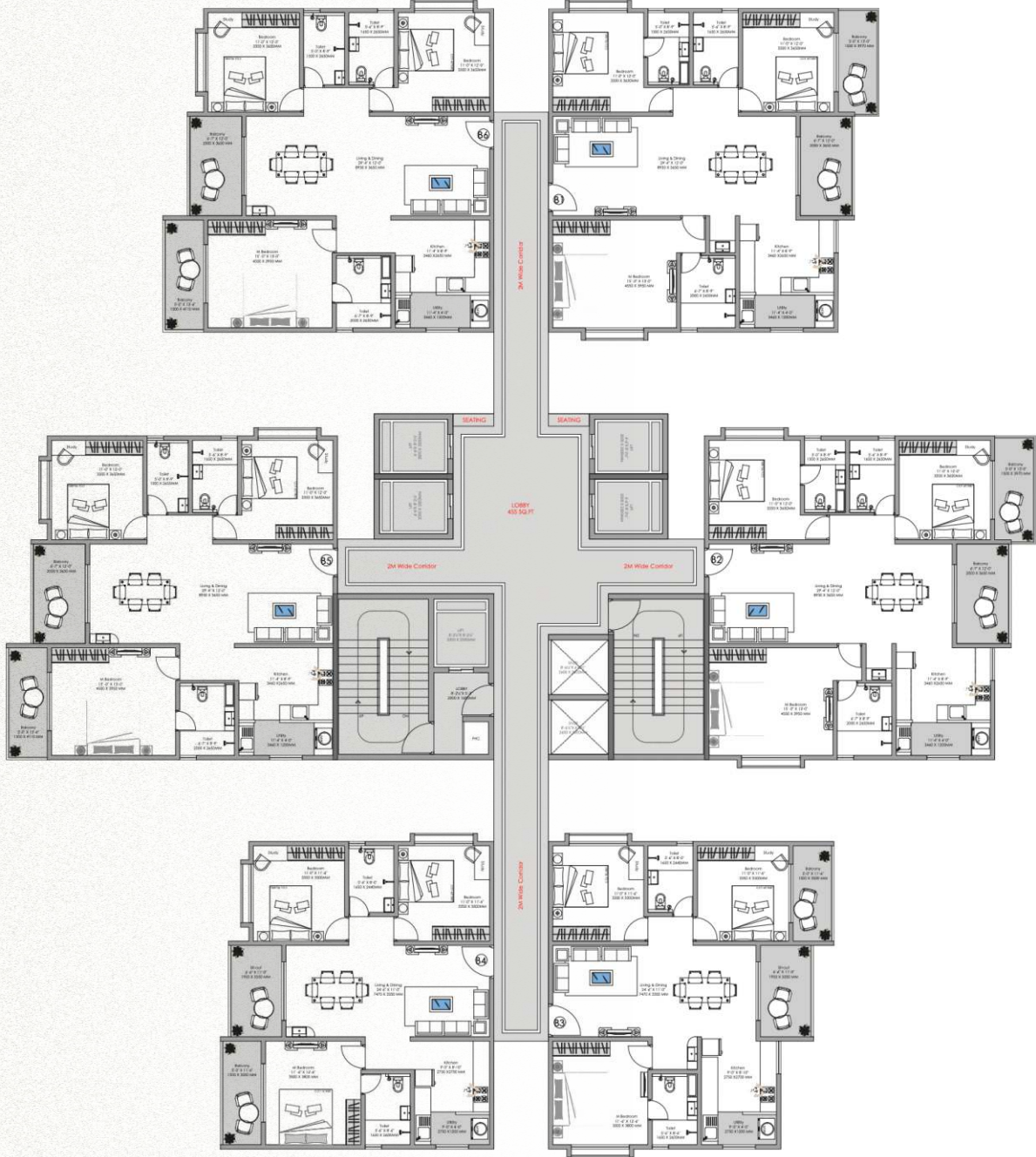
This is for internal discussion and can't be used for marketing or sales purposes

Proposed Master Plan Layout



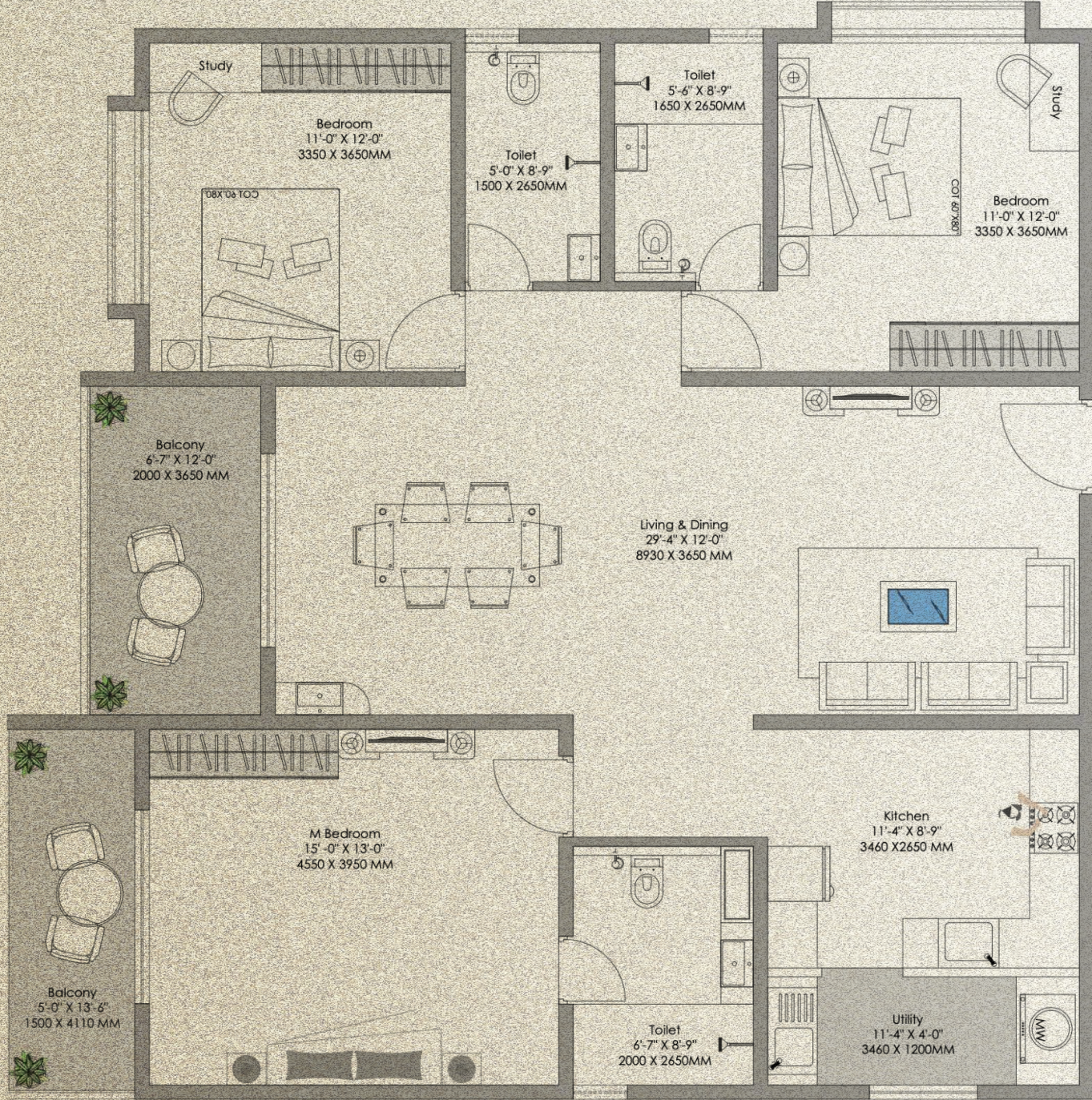
This is for internal discussion and can't be used for marketing or sales purposes

Proposed One Floor Plan

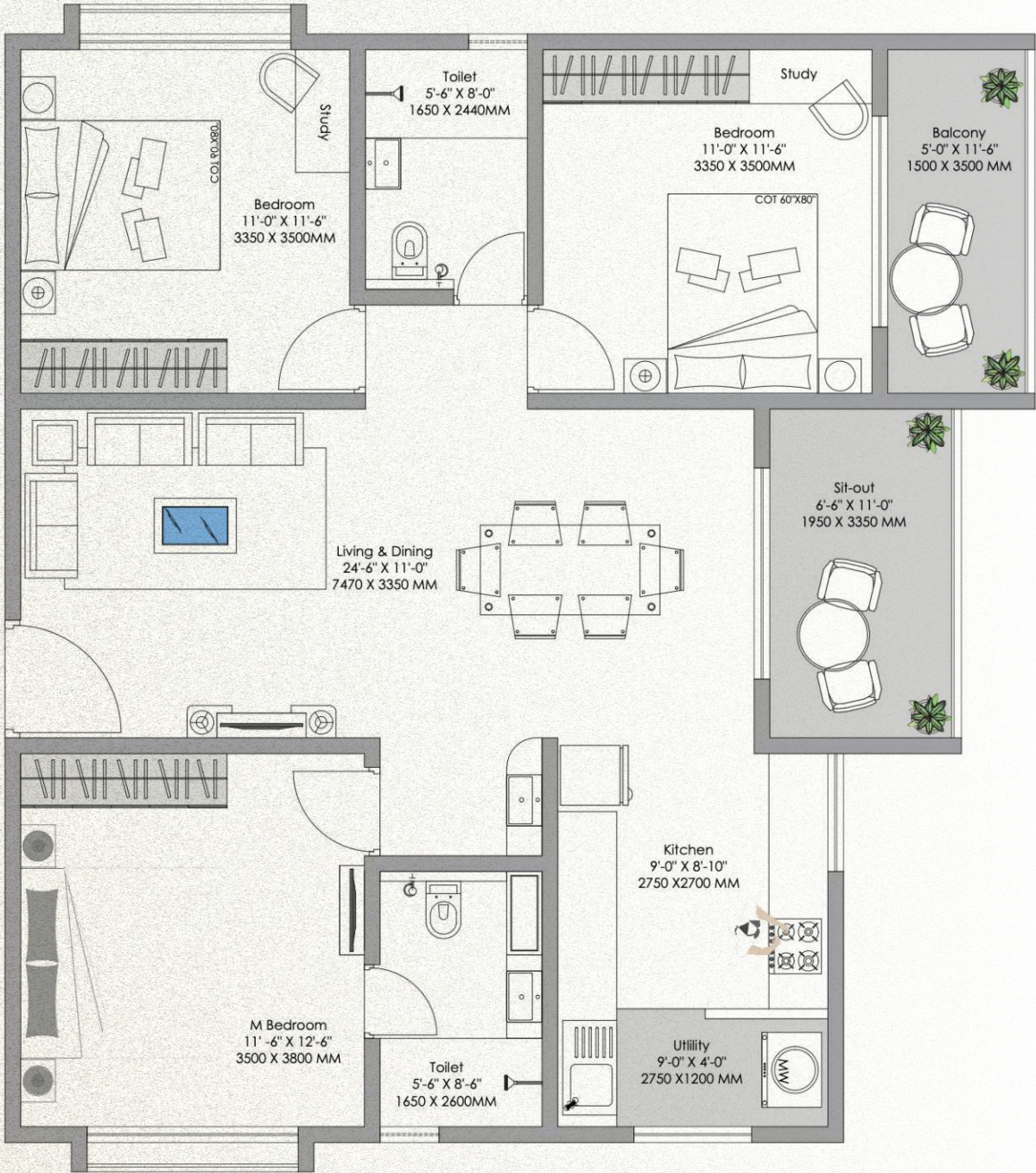


This is for internal discussion and can't be used for marketing or sales purposes

Proposed
3B + 2T Floor Plan



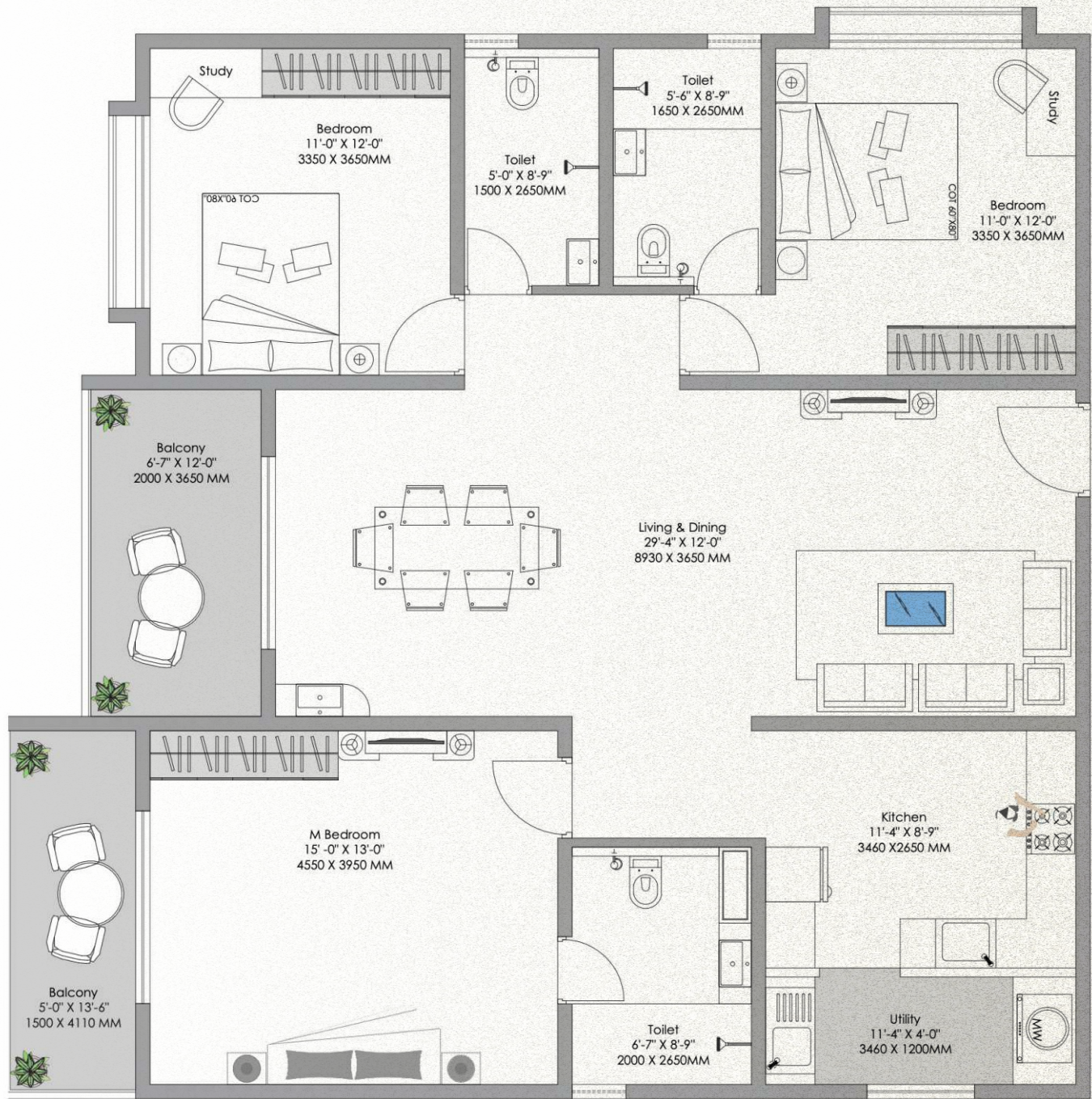
This is for internal discussion and can't be used for marketing or sales purposes



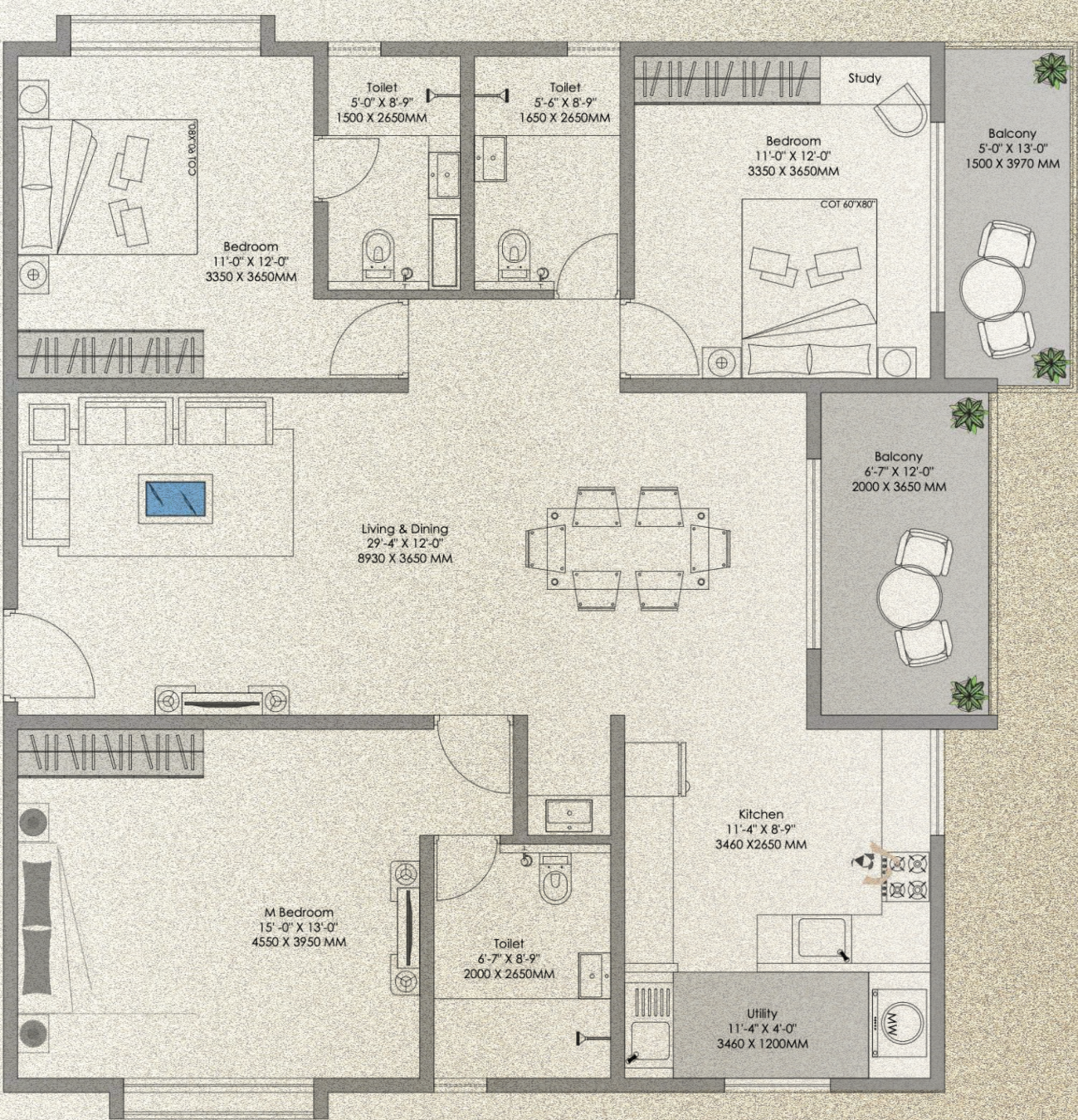
This is for internal discussion and can't be used for marketing or sales purposes



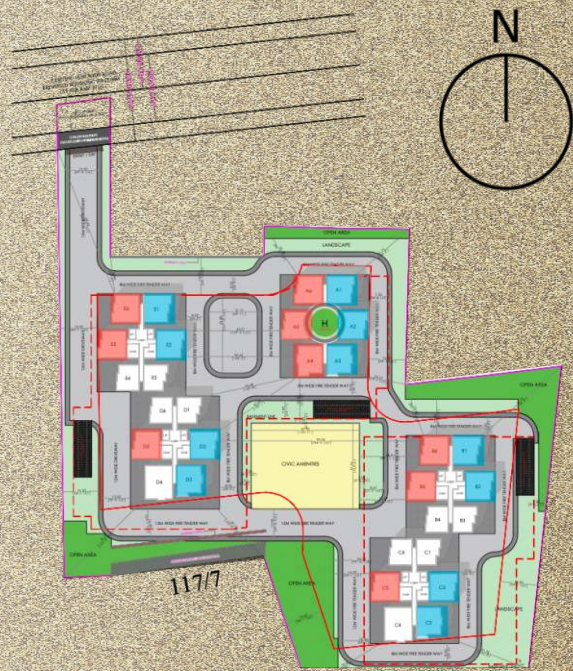
Proposed 3B + 3T Unit Plan



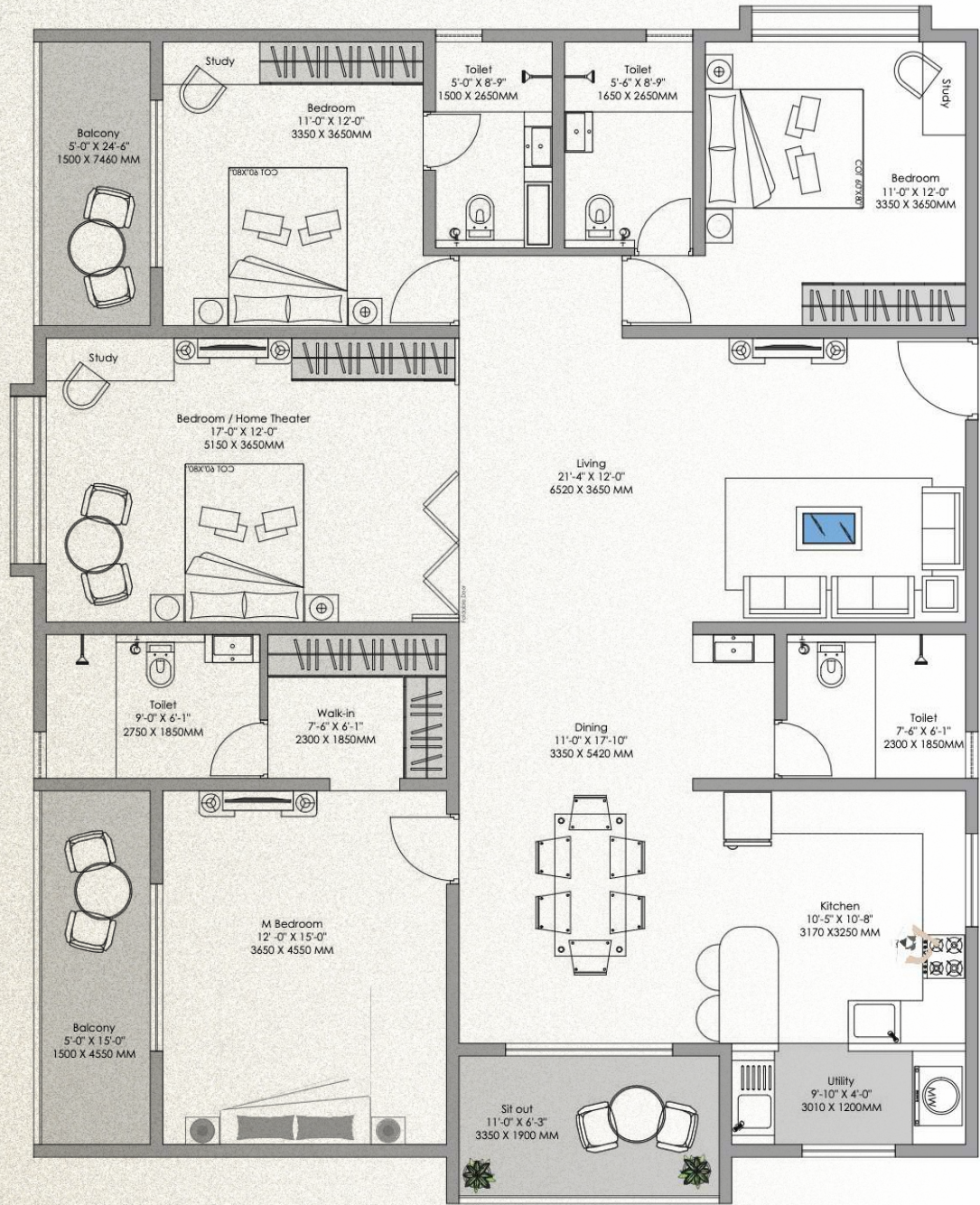
This is for internal discussion and can't be used for marketing or sales purposes



This is for internal discussion and can't be used for marketing or sales purposes



Proposed
4B + 4T Unit Plan



This is for internal discussion and can't be used for marketing or sales purposes

PROPOSED UNIT SIZES

- Premium 3 Bhk + 2 T - 1550-1600 Sqft
- Luxury 3 Bhk + 3 T - 1900-1950 Sqft
- Luxury 4 Bhk + 4 T - 2600-2650 Sqft

Launching Price
₹ 11000/- ALL INC.

CURRENT STAGE OF CONSTRUCTION

Marketing office work has been started and it is set to be launched by January 2025. Layout is almost finalised and we are working on the clubhouse amenities finalisation. We will be closing the internal investments from directors of the company by December 2024.

This is for internal discussion and can't be used for marketing or sales purposes

COMING IN GUNJUR

This is for internal discussion and can't be used for marketing or sales purposes

A modern, multi-story apartment building at dusk, illuminated from within, with a red car parked in the foreground and two people walking on the sidewalk.

A 3D architectural rendering of a modern multi-story apartment building. The building features a mix of white and dark blue facades, with numerous balconies and windows. A swimming pool is visible in the foreground, surrounded by greenery and a paved area. The sky is clear and blue.

This is for internal discussion and can't be used for marketing or sales purposes

Let's Start Your Investment with Sanjeevini Group
and Build the Legacy together Forever



☎ +91 8088 691 696 (Vivek Singh)
Director- Sales & Marketing

✉ enquire@sanjeevinigroups.com

📍 4th Floor, Friends, Nest Apartment, Narayanappa
Garden, Near Swastha Hospital, Whitefield, Bangalore-560066