

# THE ADWAITH

By SANJEEVINI



*Trust of Happiness*

**SANJEEVINI**<sup>TM</sup>  
**GROUP**

# Imagine an Oasis

A retreat from  
rush of the city.



**A space designed to unwind,**  
recharge & reawaken every sense.

A rare sanctuary in the heart of

# The Bengaluru

Bengaluru is a city that thrives on ambition, innovation, and energy;

It's a land of progress, a hub of opportunity. But even here, amidst the constant motion, there's a need for stillness, need for a space that breathes.



A place where the five elements -

Earth, water, air, light, and forest - come together to create something extraordinary.

A life of balance and quiet luxury, **The Adwaith.**

**Crafted by Sanjeevini Group**, The Adwaith is more than a space - a home that evolves with you, nurturing future and rooted in sustainability.

# Designed To Experience Life

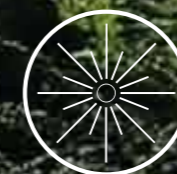
like never before.

Embracing

# The Five Elements



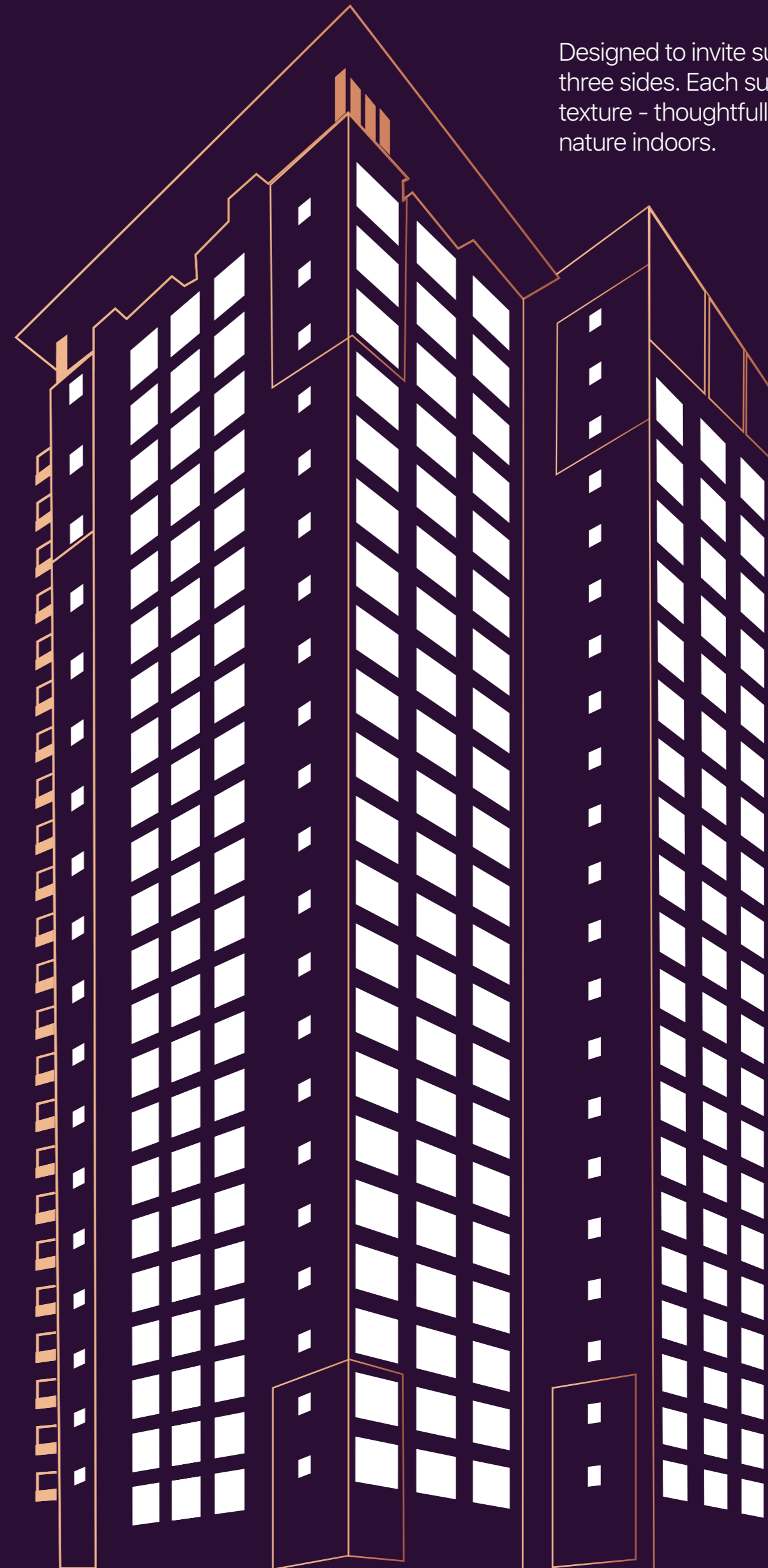
**Amid nature,** the way it's always supposed to be.



Every morning, touching the golden rays,  
filtering through the window.

Blessed by light - **every space glows with warmth,  
nudging you to take on the day.**

Designed to invite sunlight in, from  
three sides. Each surface, each  
texture - thoughtfully chosen to bring  
nature indoors.



# The Play of Light & Shadow

See through your  
future abode, a  
glimpse through  
the window into the  
life at **AARKA**.



Cool stone under your feet,  
The solid comfort of earth's embrace,  
Grounded in nature, yet connected  
to the world.

**Close to everything you need,  
surrounded by everything you love.**



AVANI

**The Ground  
Beneath  
Your Feet**

Breathe in the freedom to  
shape your every moment;  
and let each breeze guide you  
home to **ANILA**.



The soft rustle of trees,  
the hush of an open space,  
the crisp morning breeze,  
the fragrance of rain-soaked earth.

---

Wide open corridors, a gentle cross-breeze,  
and **centralized air systems - moving  
unseen, and unheard.**



**The Scent  
Of Fresh Air**



The patter of rain,  
The soft echo of rippling water,  
The cool caress of water on your skin,

Here, water is respected. Preserved.

Rainwater harvesting, sustainable water cycles  
and elemental spa retreats.

**A home that flows in harmony with nature.**



AQUA

# The Sweetness Of Flowing Water

The rustling of leaves, birds calling at dusk,  
a forest within the city - lush, green and alive.

Meandering paths through shaded trails,  
secret nooks for quiet moments and vibrant  
ecosystems that hum with life.

**Not curated, not controlled - just  
beautifully alive.**



ARANYA

# The Symphony Of Murmuring Canopy



**THE ADWAITH**  
By SANJEEVINI

**Where Life  
Is Born**





Amphitheatre



Lily Pond



Outdoor  
Fitness Station



Multi Purpose  
Play Courts

Outdoor Amenities

Crafted To Turn  
Every Moment  
Into An Experience

At **'The Adwaith'** every amenity is created to enrich your daily experience.

Designed for those who seek beauty, balance and belonging.



### Pet-Friendly Parks

Spaces designed for your furry companions to run and play freely.



### Lush Green Spaces

Relax in floral gardens, tree courts and fragrance-filled pathways.



### Sky Bridge & Open Lawns

Breathe in fresh air, as you take in the panoramic views.

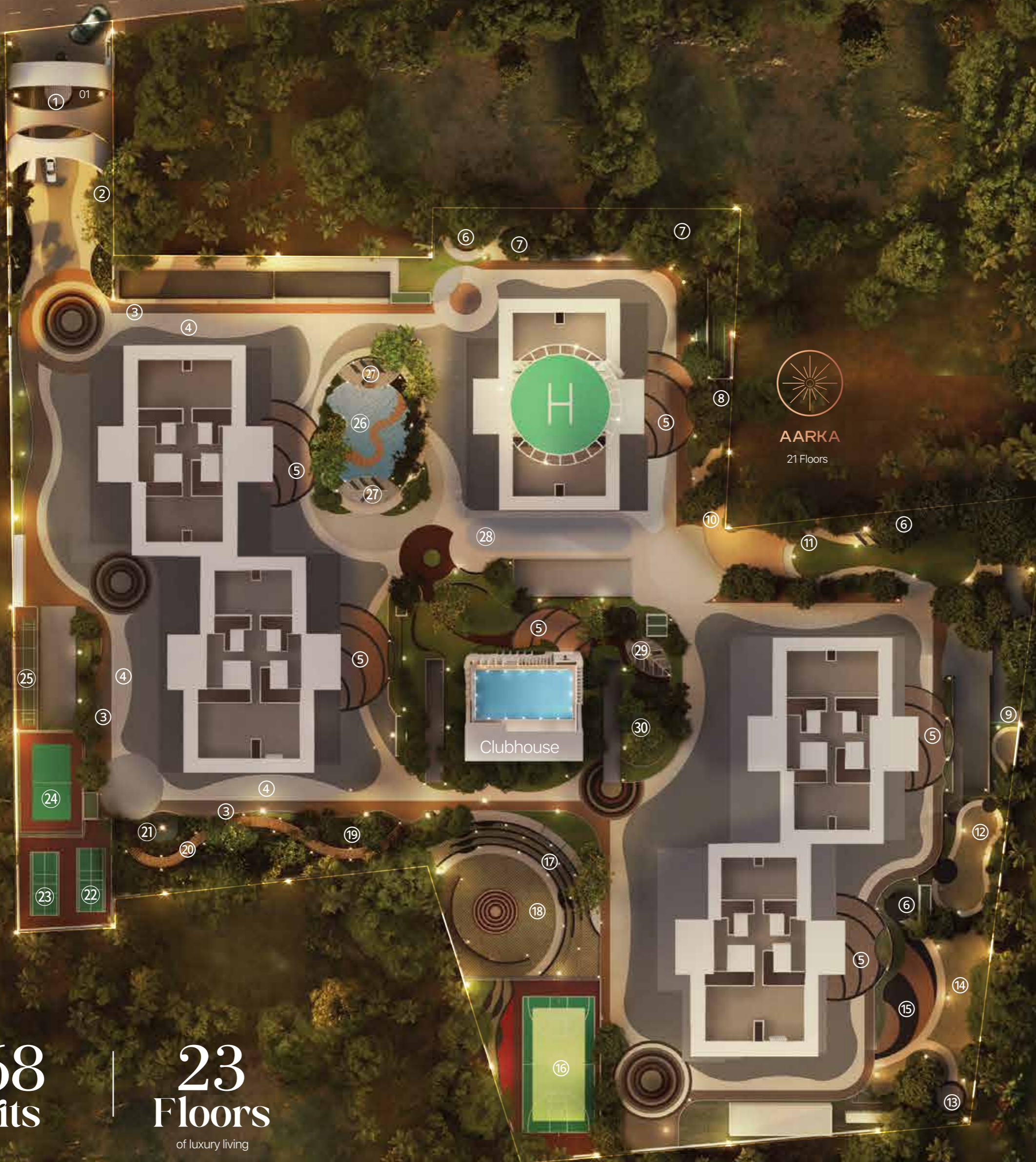
### Outdoor Amenities

# A Haven of Open Skies & Verdant Gardens

Surrounded by nature, the landscape at **'The Adwaith'** is more than just greenery - it's a sanctuary.

# Move Freely & Live Fully

Designed for all ages, the community brings together recreation and wellness.



## Outdoor Amenities

01. Entrance Gateway With Security Cabin
02. Entrance Water Feature
03. Cycle Track
04. Jogging Track
05. Drop-Off: Feature Wall With Block Name
06. Pavilion - With Seating Below
07. Outdoor Gym/ Fitness Zone, Reflexology Pathway(Bare Foot Walkway)
08. Floral Vista - With Seating
09. Cricket Pitch With Net - 1
10. Sandpit With Children Play Area & Climbing Wall
11. Kids Play Area On Lawns - 5 -12+ Yrs
12. Pet Exercise Space - With Play Equipments
13. Meditation Pavilion
14. Swings Park
15. Tot Lot On Epdm 0 - 5 yrs
16. Multi-Purpose Playcourt: Tennis & Basket Ball
17. Amphitheatre
18. Put-Put Golf
19. Dense Green Belt Inspired By Miyawaki Forest
20. Forest walk Trail
21. Fire Pit
22. Pickle Ball
23. Badminton Court
24. Volley Ball Court
25. Cricket Pitch With Net - 2 With Bowling Machine
26. Lily Pond
27. Pergola With Seating
28. Skating Rink
29. Food Counter Pavilion
30. Party Lawn

Across

8.3 Acres

668 Units

23 Floors  
of luxury living



# A Clubhouse Beyond Expectations

For the parts of your day that aren't scheduled.

With **45,000 sq. ft.** to pause, recharge or reconnect - just what you need.

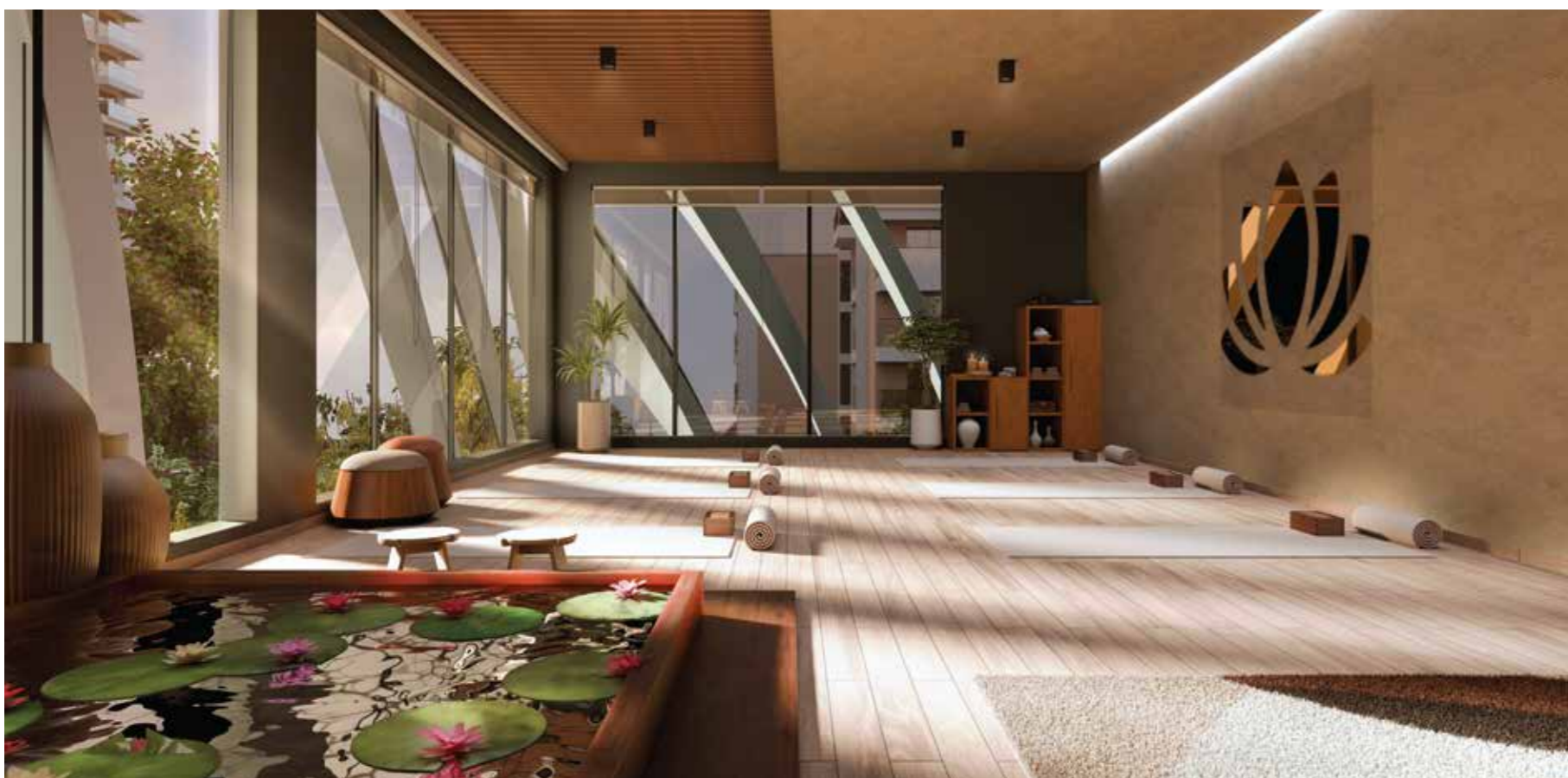


## Heated Pool & Infinity Pool

Swim in comfort, no matter the season.

---

Clubhouse Amenities



## Rejuvenation & Relaxation

## Yoga Room & Sauna

Spaces to unwind, recharge and find your inner balance.

---



## Salon & Spa

Indulge in self-care without leaving home.

Mini Theatre  
& Party Halls



## Reconnection & Recreation

Clubhouse Amenities



Guest  
Suites

Indoor  
Games Room



**For voices, laughter and the quiet after.**

Some weekends call for celebration, others for silence - at **'The Adwaith'**, there's space for both.

A movie with friends, a quiet evening of games, a guest suite that makes family feel like they never left home.

It's not about keeping busy - it's about having space for what matters.



**Convenience At  
Your Doorstep**

Co-Working Space

## Clubhouse Amenities

# A Clubhouse, Upgraded

Exclusive to 'The Adwaith' Residents

### Ground Floor

Heated Swimming Pool  
Kids Pool  
First Aid Room & Pharmacy

---

### 1st Floor

Creche  
Supermarket

---

### 2nd Floor

Yoga Room  
Gymnasium

---

### 3rd Floor

Banquet Hall

---

### 4th Floor

Theatre I  
Theatre II

### 5th Floor

Party Hall  
Table Tennis Room  
Billiards Room  
Mini Games Room

---

### 6th Floor

Co-Working Space  
Business Centre  
Cafeteria  
Guest Rooms  
Salon & Spa

---

### Terrace

Sun Deck Area  
Infinity Pool  
Toddlers Pool



# Floor Plans & Layouts

Every detail is designed to bring comfort, convenience and connection —

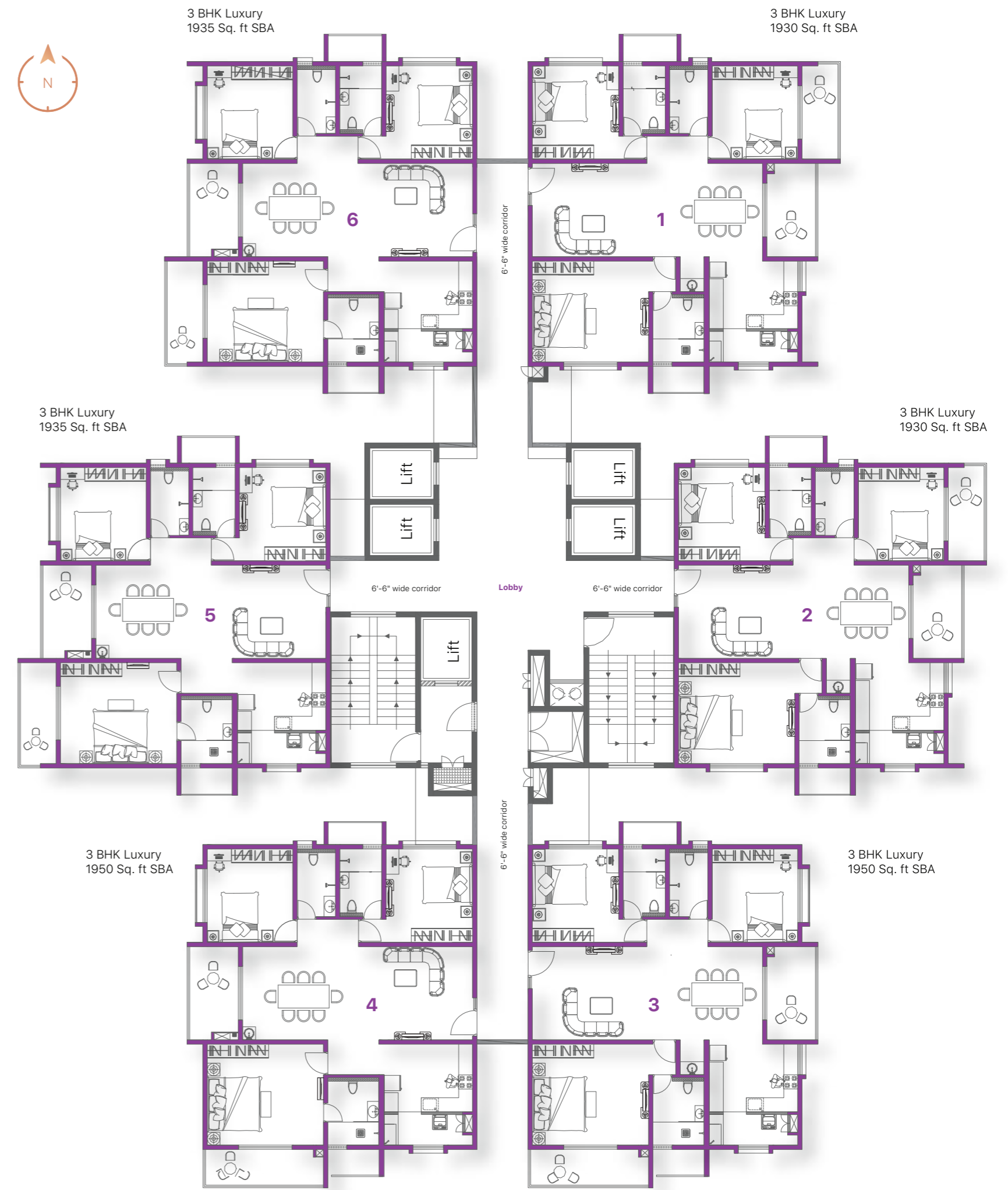
Creating a life that feels effortless, fulfilling and truly complete.

**3 BHK** Smart Apartments

**3 & 4 BHK** Luxury Apartments

## Block Plan

Floors  
2, 3, 6, 7, 8, 10, 11, 12, 15, 16, 19 & 20





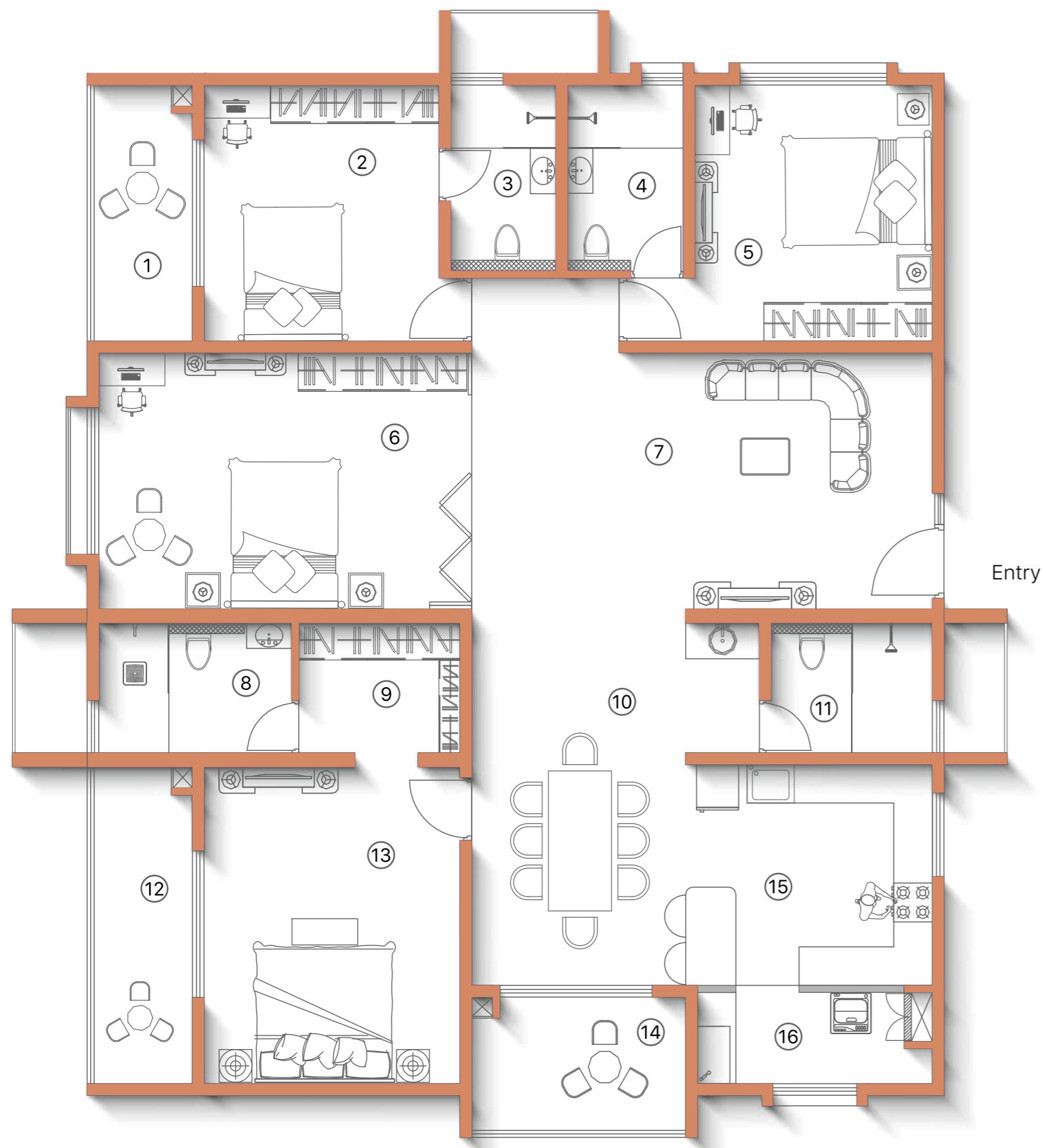
# 4 BHK

Luxury, 2555 Sq.Ft - SBA, 1633 - Carpet Area



AN4, AQ4

East Facing



01. BALCONY - 4'11" X 12'

02. BEDROOM - 11' X 12'

03. TOILET - 4'11" X 8'8"

04. TOILET - 5'5" X 8'8"

05. BEDROOM - 11'1" X 12'

06. BEDROOM / HOME THEATRE - 17'5" X 12'

07. LIVING ROOM - 21'6" X 12'

08. M. TOILET - 9' X 6'1"

09. WALK-IN - 7'7" X 6'1"

10. DINING - 10' X 16'11"

11. POWDER ROOM - 7'7" X 6'1"

12. BALCONY - 4'11" X 14'10"

13. M. BEDROOM - 12' X 14'10"

14. SIT-OUT - 10' X 6'7"

15. KITCHEN - 11'6" X 10'4"

16. UTILITY - 9'8" X 4'3"



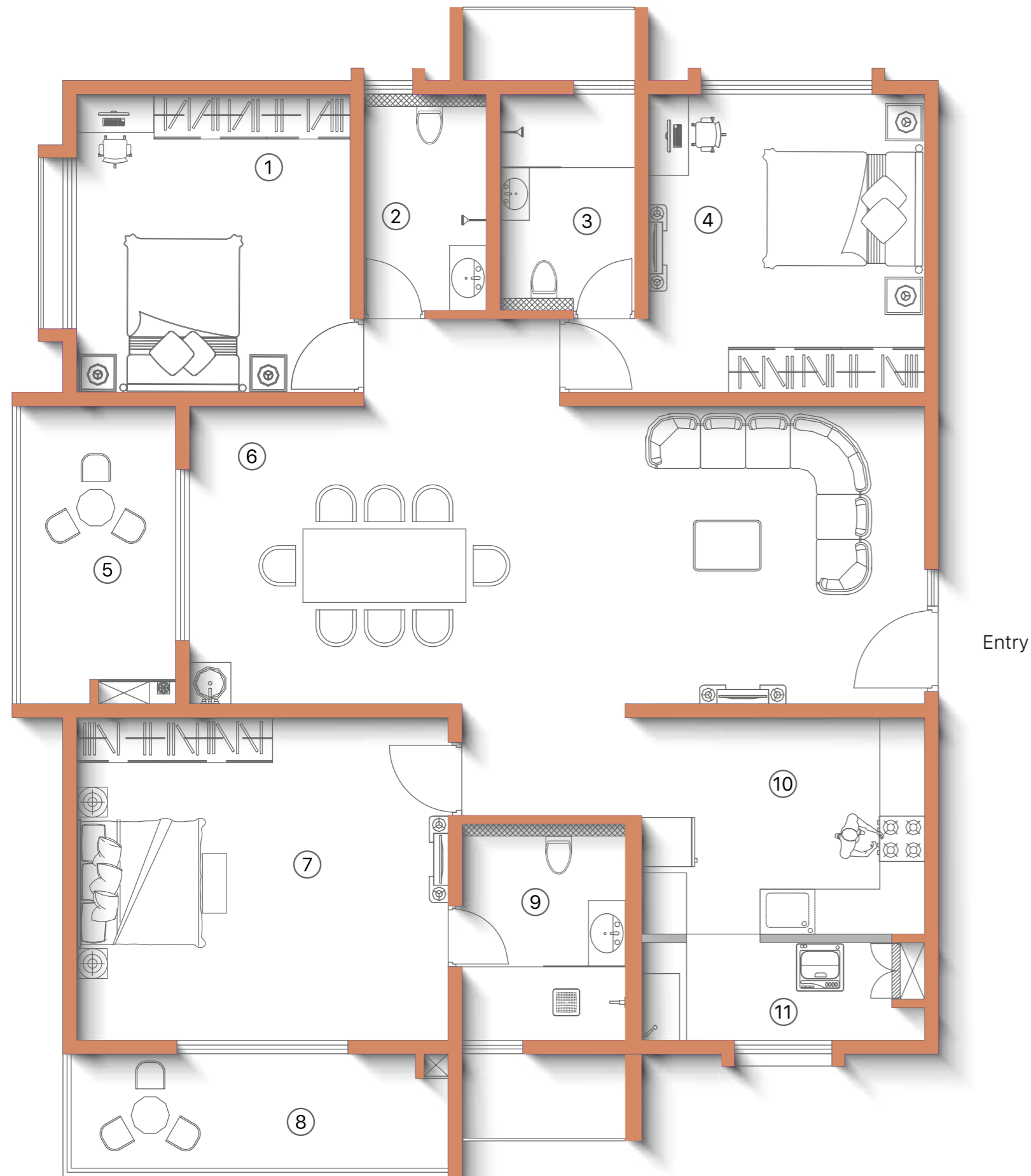
# 3 BHK

Luxury, 1950 Sq.Ft - SBA, 1237 - Carpet Area



AA4

East Facing



- 01. BEDROOM - 11' X 12'
- 02. TOILET - 4'11" X 8'8"
- 03. TOILET - 5'5" X 8'8"
- 04. BEDROOM - 11'1" X 12'
- 05. SIT-OUT - 6'7" X 12'
- 06. LIVING & DINING - 29'6" X 12'
- 07. M. BEDROOM - 14'11" X 13'

- 08. BALCONY - 15'6" X 4'11"
- 09. M. TOILET - 6'7" X 8'8"
- 10. KITCHEN - 11'4" X 8'8"
- 11. UTILITY - 10'1" X 3'11"



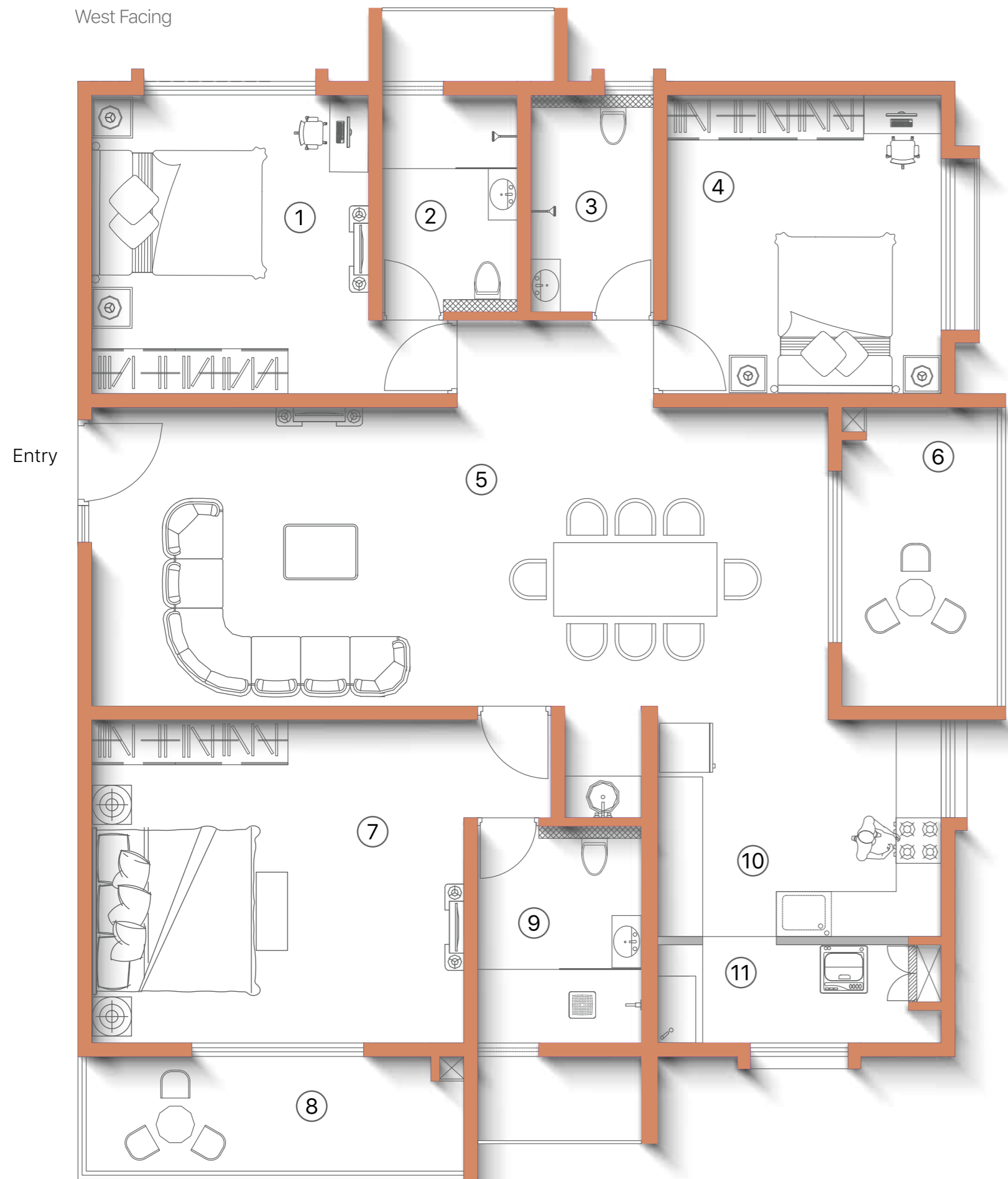
# 3 BHK

Luxury, 1950 Sq.Ft - SBA, 1239 - Carpet Area



AA3, AN3, AQ3

West Facing



- 01. BEDROOM - 11'1" X 12'
- 02. TOILET - 5'5" X 8'8"
- 03. TOILET - 4'11" X 8'8"
- 04. BEDROOM - 11' X 12'
- 05. LIVING & DINING - 29'6" X 12'
- 06. SIT-OUT - 6'7" X 12'
- 07. M. BEDROOM - 14'11" X 13'
- 08. BALCONY - 15'6" X 4'11"
- 09. M. TOILET - 6'7" X 8'8"
- 10. KITCHEN - 11'4" X 8'8"
- 11. UTILITY - 10'1" X 3'11"



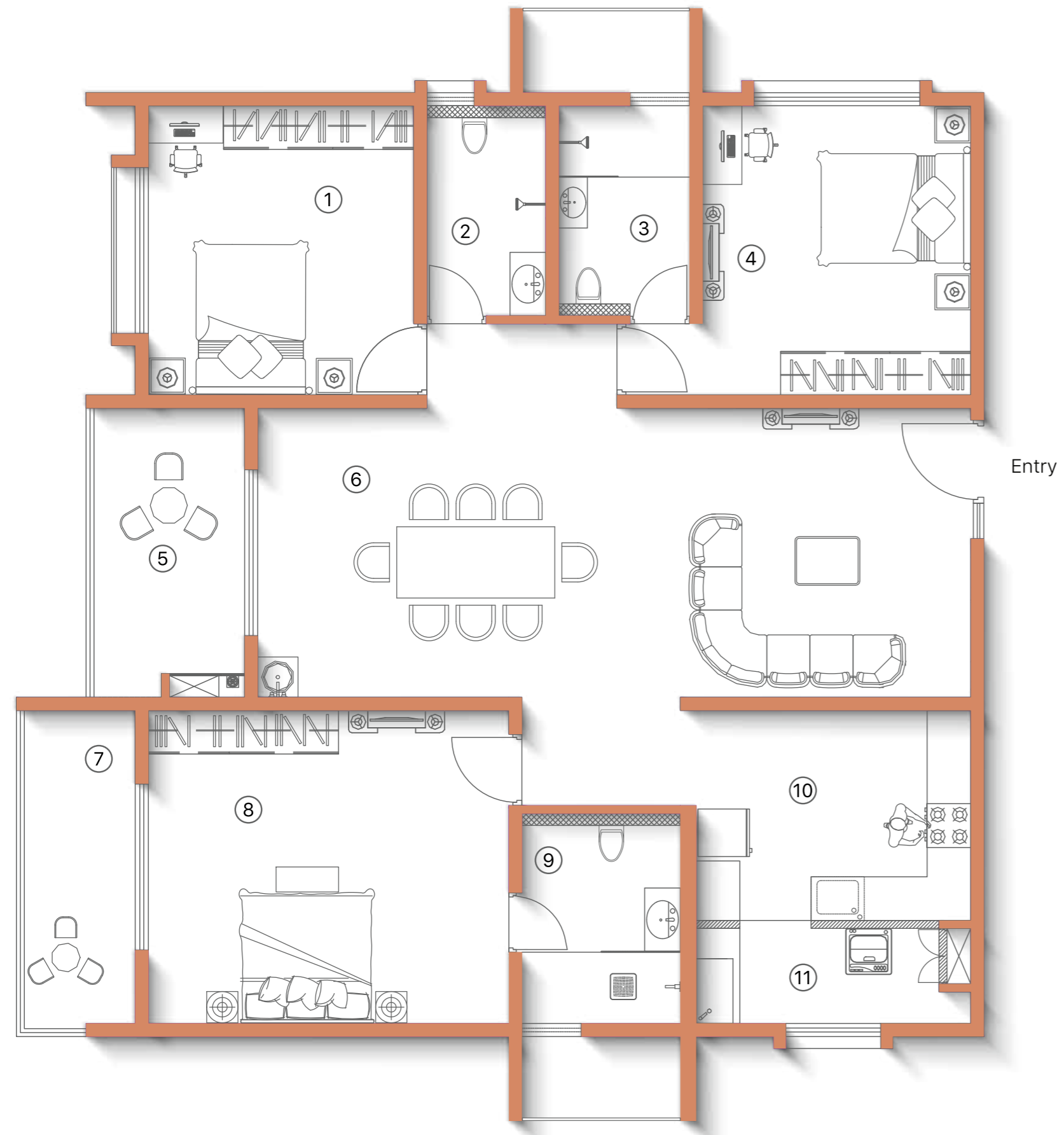
# 3 BHK

Luxury, 1935 Sq.Ft - SBA, 1237 - Carpet Area



AA5, AV5, AN5, AQ5, AR5, AA6, AV6, AR6

East Facing



- 01. BEDROOM - 11' X 12'
- 02. TOILET - 4'11" X 8'8"
- 03. TOILET - 5'5" X 8'8"
- 04. BEDROOM - 11'1" X 12'
- 05. SIT-OUT - 6'7" X 12'
- 06. LIVING & DINING - 29'6" X 12'
- 07. BALCONY - 4'11" X 13'6"

- 08. M. BEDROOM - 14'11" X 13'
- 09. M. TOILET - 6'7" X 8'8"
- 10. KITCHEN - 11'4" X 8'8"
- 11. UTILITY - 10'1" X 3'11"

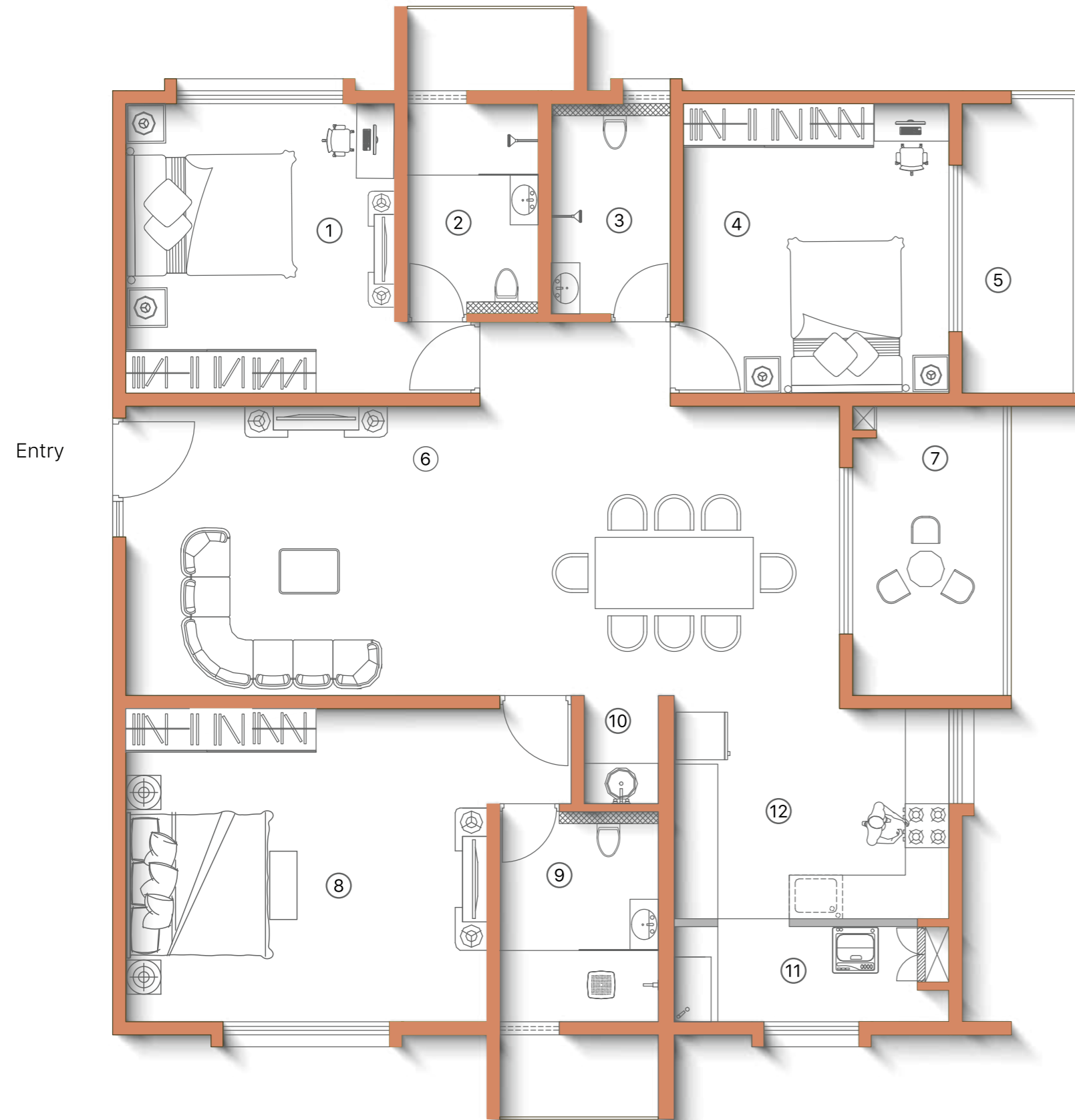


# 3 BHK

Luxury, 1930 Sq.Ft- SBA, 1237 - Carpet Area

AA1, AA2,AV1, AR1

West Facing



01. BEDROOM - 11'1" X 12'

02. TOILET - 5'5" X 8'8"

03. TOILET - 4'11" X 8'8"

04. BEDROOM - 11' X 12'

05. BALCONY - 4'11" X 12'6"

06. LIVING ROOM & DINING - 29'6" X 12'

07. SIT-OUT - 6'7" X 12'

08. M. BEDROOM - 14'11" X 13'

09. M. TOILET - 6'7" X 8'8"

10. WASH

11. UTILITY - 10'1" X 3'11"

12. KITCHEN - 11'4" X 8'8"

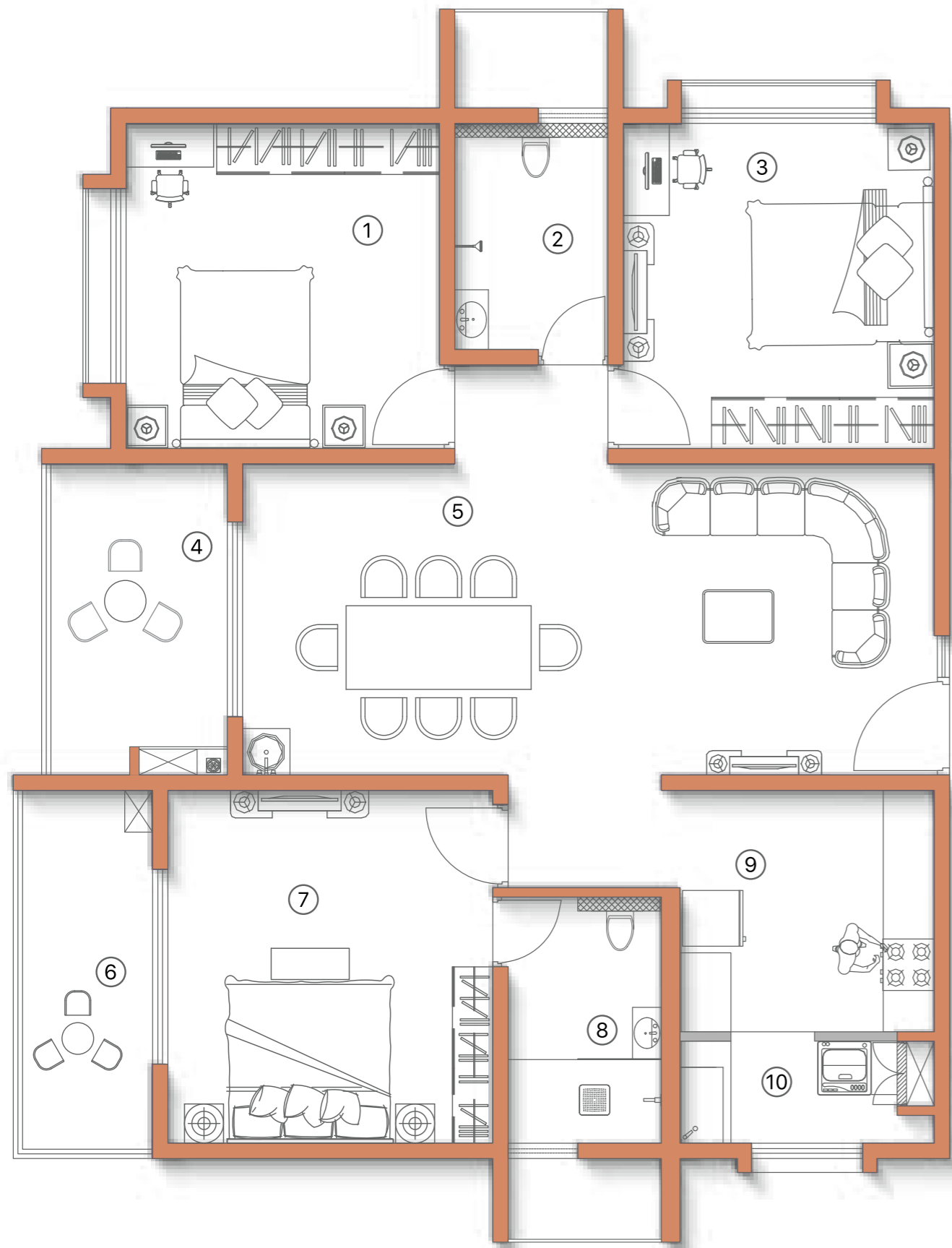


# 3 BHK

Smart, 1550 Sq.Ft - SBA, 967 - Carpet Area

AV4, AN6, AQ6, AR4

East Facing



Entry

01. BEDROOM - 11'1" X 11'6"

02. TOILET - 5'5" X 8'

03. BEDROOM - 11' X 11'6"

04. SIT-OUT - 6'7" X 11'

05. DINING & LIVING ROOM - 24'5" X 11'

06. BALCONY - 4'11" X 13'

07. M. BEDROOM - 11'6" X 12'6"

08. M. TOILET - 5'5" X 8'8"

09. KITCHEN - 9' X 8'6"

10. UTILITY - 7'8" X 3'7"



Entry

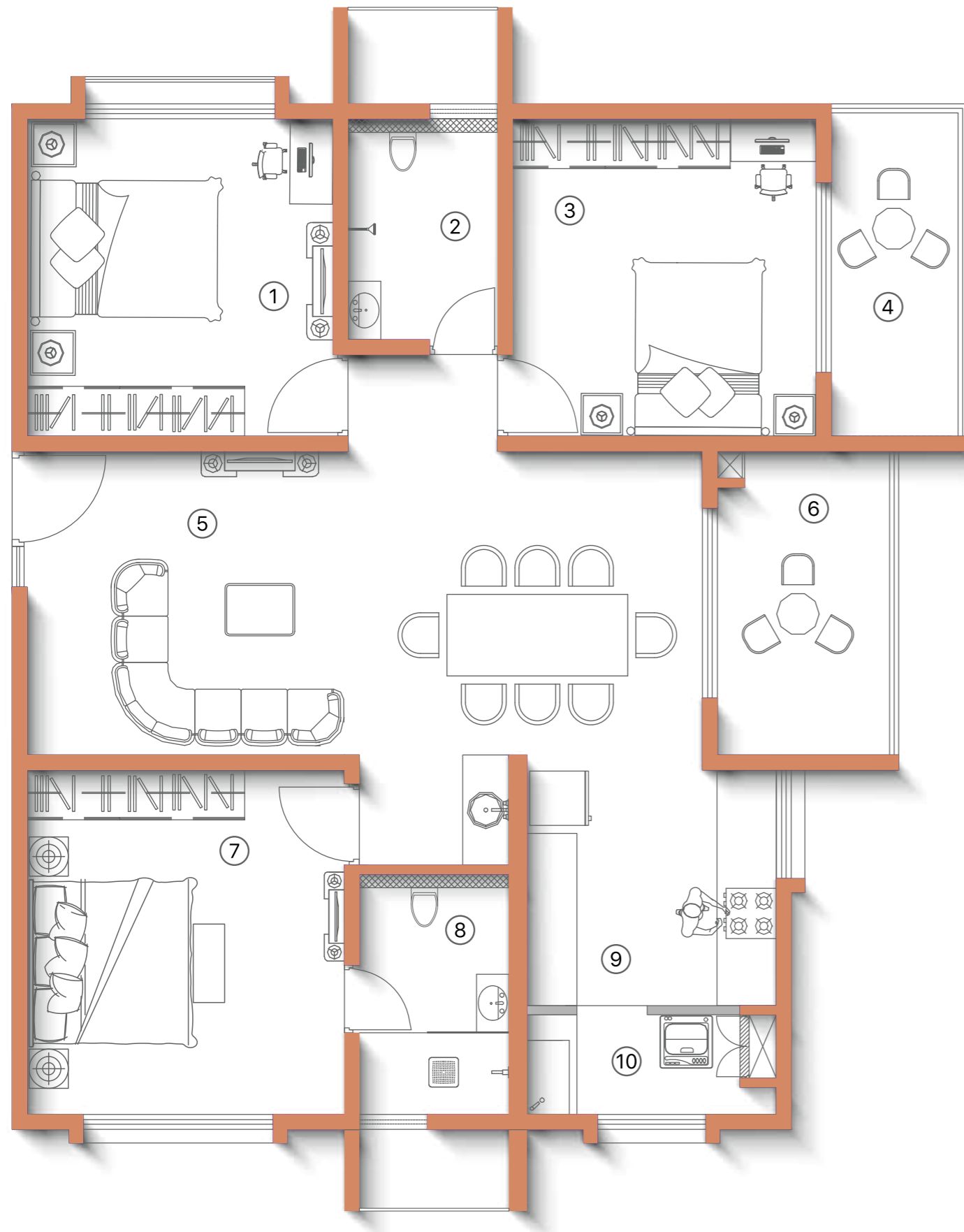
# 3 BHK

Smart, 1545 Sq.Ft - SBA, 963 - Carpet Area



AV3, AN1, AQ1, AR3

West Facing



01. BEDROOM - 11'1" X 11'6"

02. TOILET - 5'5" X 8'

03. BEDROOM - 11' X 11'6"

04. BALCONY - 5' X 12'

05. LIVING & DINING - 24'5" X 11'

06. SIT-OUT - 6'7" X 11'

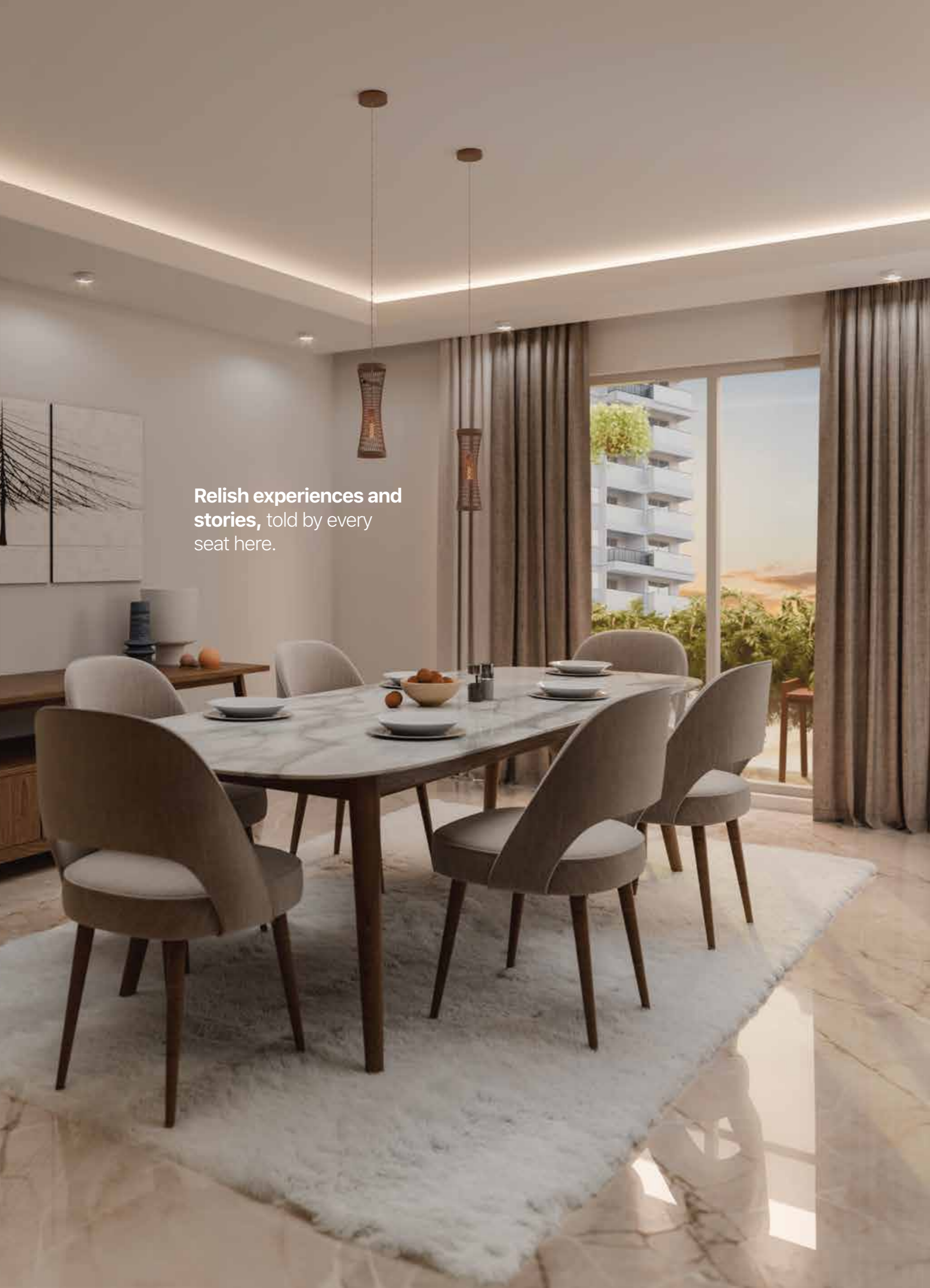
07. M. BEDROOM - 11'6" X 12'6"

08. M. TOILET - 5'5" X 8'8"

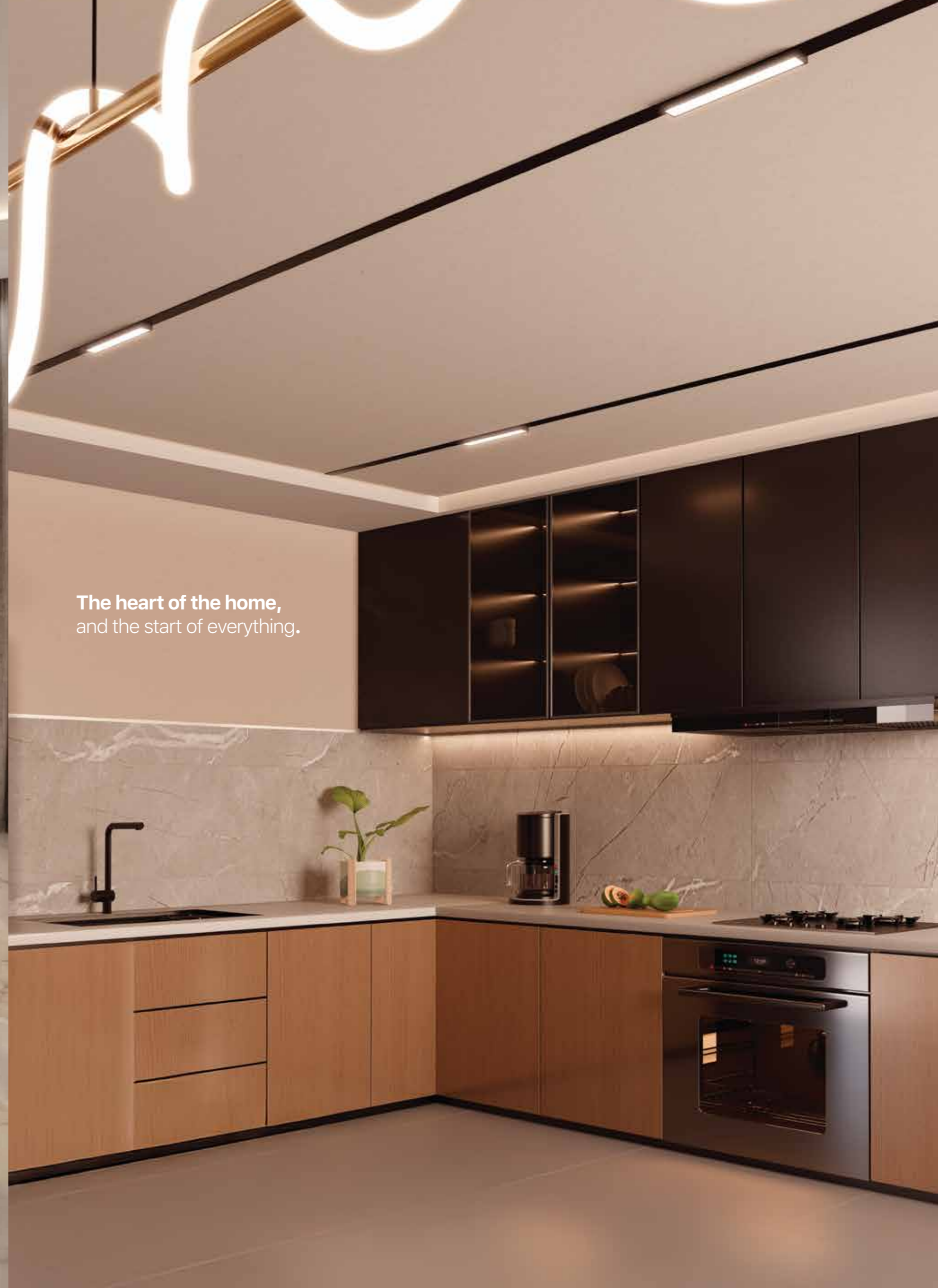
09. KITCHEN - 9' X 8'6"

10. UTILITY - 7'9" X 3'7"





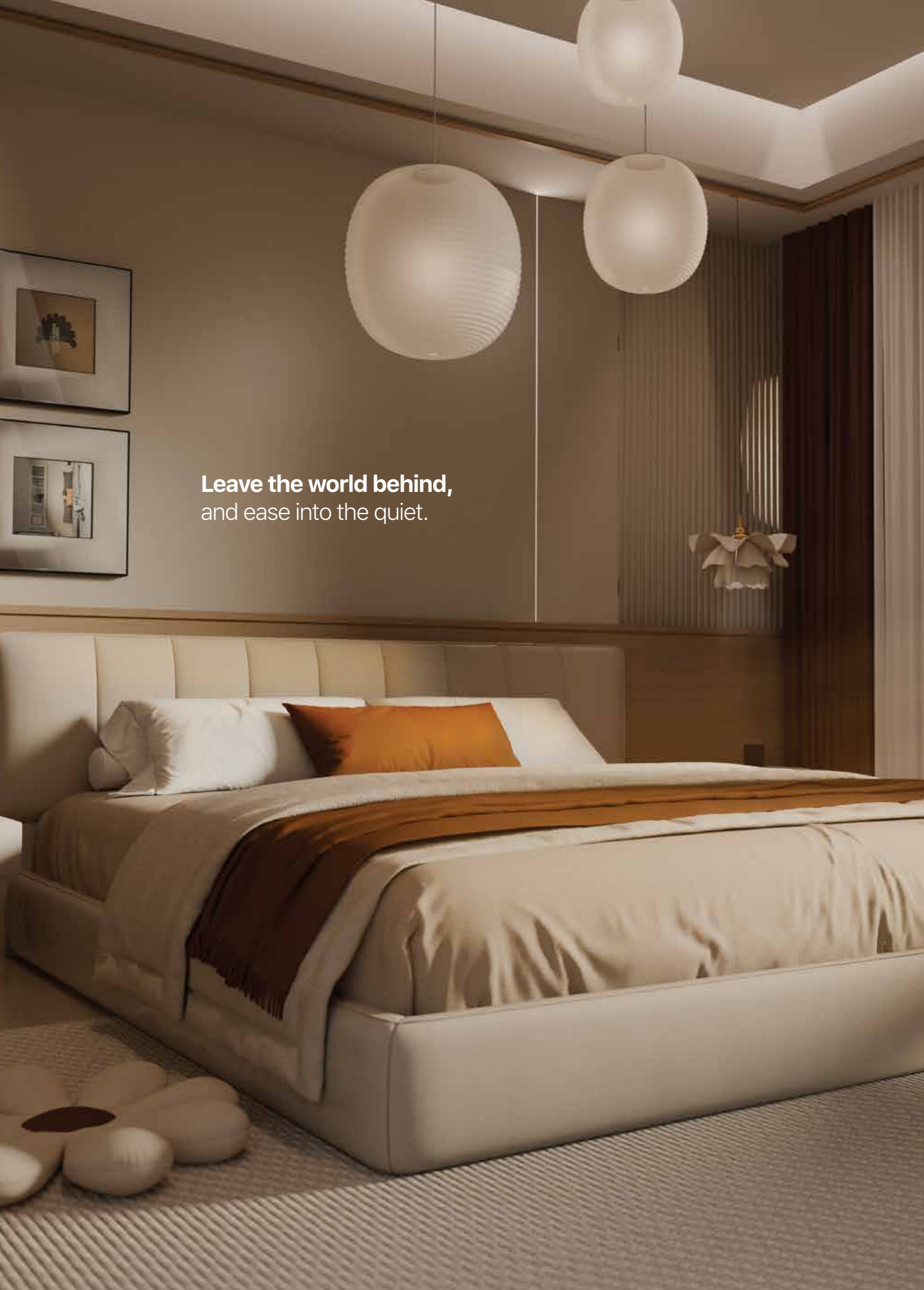
Relish experiences and stories, told by every seat here.



The heart of the home, and the start of everything.



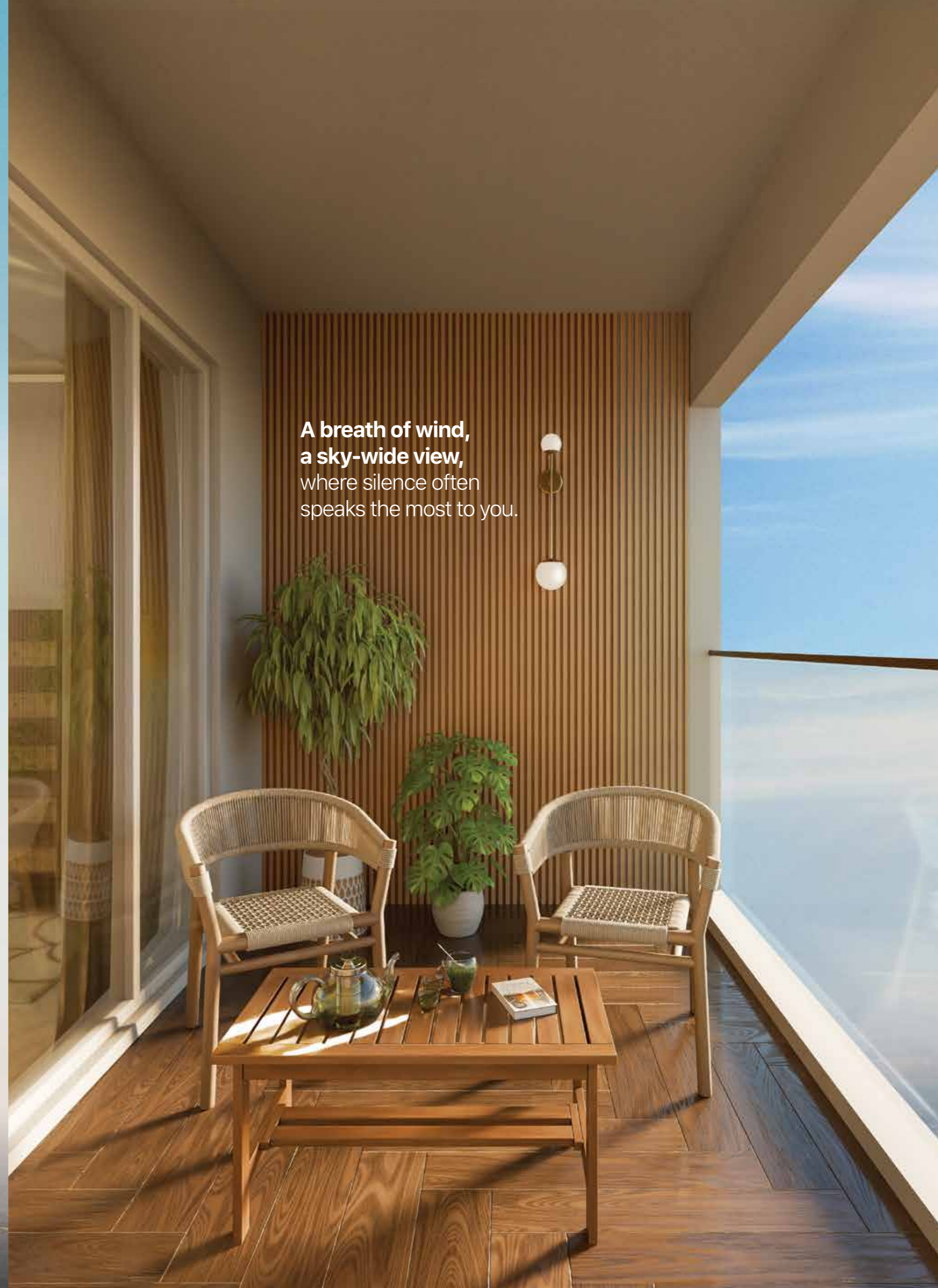
Invite new chapters of life,  
with every beam of sunlight.



Leave the world behind,  
and ease into the quiet.

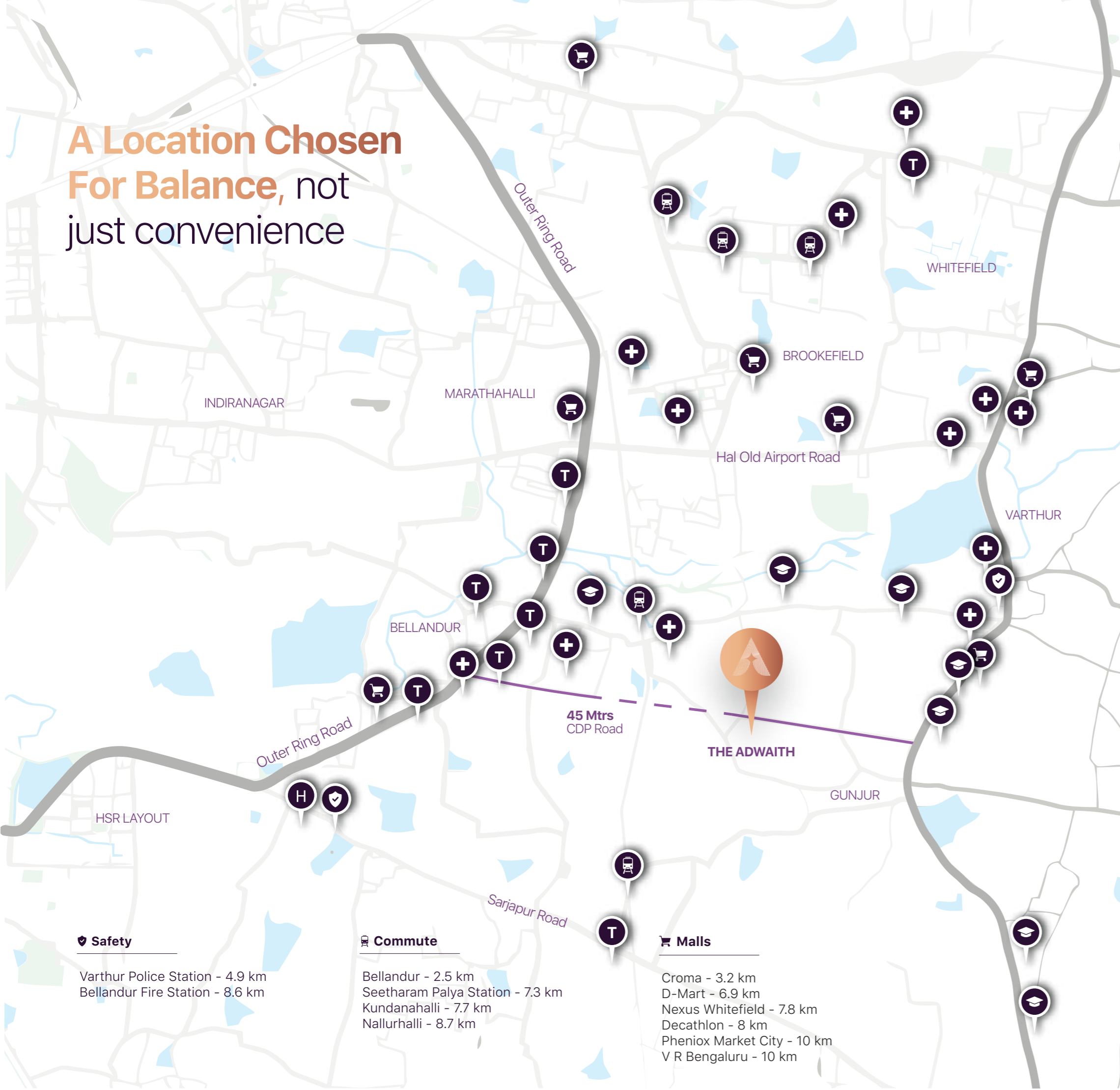


The pace softens,  
for a few moments  
that belong only to you.



**A breath of wind,  
a sky-wide view,**  
where silence often  
speaks the most to you.

**A Location Chosen For Balance,** not just convenience



**🛡️ Safety**  
 Varthur Police Station - 4.9 km  
 Bellandur Fire Station - 8.6 km

**🚆 Commute**  
 Bellandur - 2.5 km  
 Seetharam Palya Station - 7.3 km  
 Kundanahalli - 7.7 km  
 Nallurhalli - 8.7 km

**🛒 Malls**  
 Croma - 3.2 km  
 D-Mart - 6.9 km  
 Nexus Whitefield - 7.8 km  
 Decathlon - 8 km  
 Pheniox Market City - 10 km  
 V R Bengaluru - 10 km

**🎓 Schools**  
 TCIS - 2.8 km  
 Chryshallis High - 4.3 km  
 Greenhood High - 5.9 km  
 TISB - 6.6 km  
 Inventure Academy - 6.1 km  
 Oakridge International School - 7.6 km  
 Delhi Public School - 8.7 km  
 NPS Varthur - 7.2 km

**T Business & Tech Parks**  
 Infosys - 5.3 km  
 ITPL - 12 km  
 Wipro Limited - 6 km  
 Embassy Tech Village - 5.1 km  
 Prestige Tech Park - 4.1 km  
 Bridge Tech Garden - 5.4 km  
 RMZ Eco Space - 6 km  
 Bagmanne Solarium City Campus - 7.1 km

**+ Hospitals**  
 Sakra World Hospital - 5.6 km  
 Shankara Eye Hospital - 6.2 km  
 Manipal Hospital - 7.2 km  
 Cloudnine - 7.4 km  
 Mother Hood - 8 km  
 Rainbow Children Hospital - 8.7 km

# Closer To Everything. Yet, Far From The Noise

## Seamless Connectivity

Whitefield, Marathahalli and Electronic City are just a short drive away.

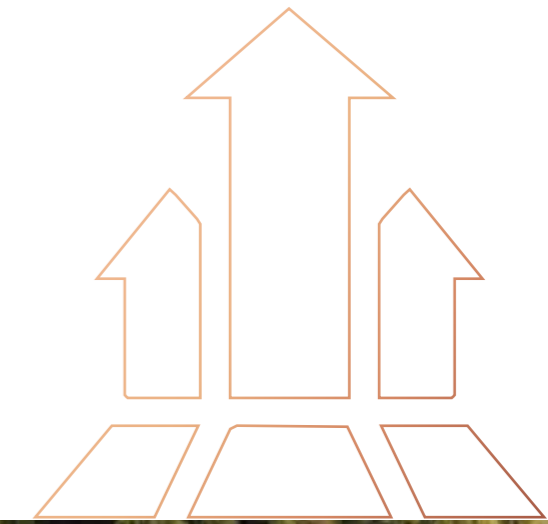
## A Thriving Community

Top schools, premium healthcare and vibrant social spaces within easy reach.

## A Sanctuary of Green

Tree-lined avenues, open skies and a landscape designed for mindful living.

# An Investment In Growth



Gunjur is on the rise, with growing demand, strong rental potential and seamless access to Bengaluru's IT hubs.

Property values here are climbing, making it the right time to invest.

- ✔ **A location with rising appreciation.**
- ✔ **A thriving rental market with high demand.**
- ✔ **Backed by Sanjeevini Group's trusted legacy.**
- ✔ **A home that feels right today;**  
A decision that makes sense for tomorrow.



# A Future In Balance

This isn't just a home; it's an investment in a life rooted in nature, shaped by trust & built to last. Delivered on time with quality construction with branded materials.



**06** Residences Per Floor  
**100%** Vastu - Compliant Design  
**73%** Open Space Layout  
**3.3<sub>mt</sub>** Floor-To-Floor Height

Space, privacy and exclusivity

Harmonizing your living space with nature's energy

Lush landscapes, fresh air and room to breathe

An elevated living experience in every sense

**4-10** Pax Passenger Lifts & 1-13 Pax Service Lift Per Block  
**600** KLD Rainwater Harvesting System  
**45,000** Sq.ft Clubhouse Experience  
**8ft** Lintels Wide Openings

Convenience at every level

A commitment to water conservation

A hub of wellness, recreation and community

Sunlit, airy spaces that invite nature in

**Helipad**  
For Emergencies

Ensuring preparedness, safety and peace of mind

**Double - Height**  
Ceiling Lobbies

A grand welcome, every time you step in

**Mivan**  
Construction Technology

Superior build quality with seismic resistance

**Daikin VRV**  
Or Equivalent Brand Air Conditioning System For Every Flat

Beneath the hush of tempered air, each room emanates a gentle care.



IGBC Gold Pre Certified Project



IGBC Gold  
Pre Certified  
Project

# Live better Feel better

Homes that stay cooler without  
running the AC all day.

---

More sunlight during the day,  
less need for artificial lights.

---

Air that feels fresher,  
rooms that feel lighter.

---

Water that's harvested, recycled,  
& treated with care.

---

Materials that are kind to the land,  
& strong through time.

---

Natural ventilation & insulation  
that work with every season.

---

Lower electricity & water bills,  
every month.

---

A home that supports  
your well-being.

---

The ease of living lightly, without  
giving up what you love.

---

An IGBC Gold certificate recognises that this home meets the highest national benchmarks in sustainable design and responsible living, as defined by the Indian Green Building Council (IGBC). It's a quiet promise that your home is built in harmony with nature. One that breathes cleaner air, uses fewer resources and stands stronger for generations to come.

**It's not just sustainable. It's sensible and thoughtful.**



# Customer Experience & Resident Services

The promise of comfort, long after you move in

---

## Concierge & Resident Services

### Dedicated Property Management

---

For effortless living

### Secure, Well-Managed Community

---

Ensuring safety and peace of mind

### Concierge Services

---

To take care of everyday needs

### On-Site Maintenance And Assistance

---

So your home remains as perfect as the day you moved in

### Handover To Homecoming

---

We're with you every step of the way

# A Vision You Can Trust

'The Adwaith' is brought to you by the Sanjeevini Group—a name built on trust, thoughtful design and sustainable living.



**Crafting Spaces,  
Creating Legacies.**

For over a decade, Sanjeevini Group has created inspiring spaces and thriving communities. Established in 2010, we are a trusted name in Bengaluru's real estate. Our design philosophy emphasizes harmony, sustainability and mindful living, aiming to enhance lifestyles while preserving the connection to nature.

## Thoughtful. Enduring. Yours.

With a strong commitment to quality, integrity and future-ready design, Sanjeevini Group ensures that your home isn't just a place to live, but a space to thrive.

8+

Completed  
Projects

1,250+

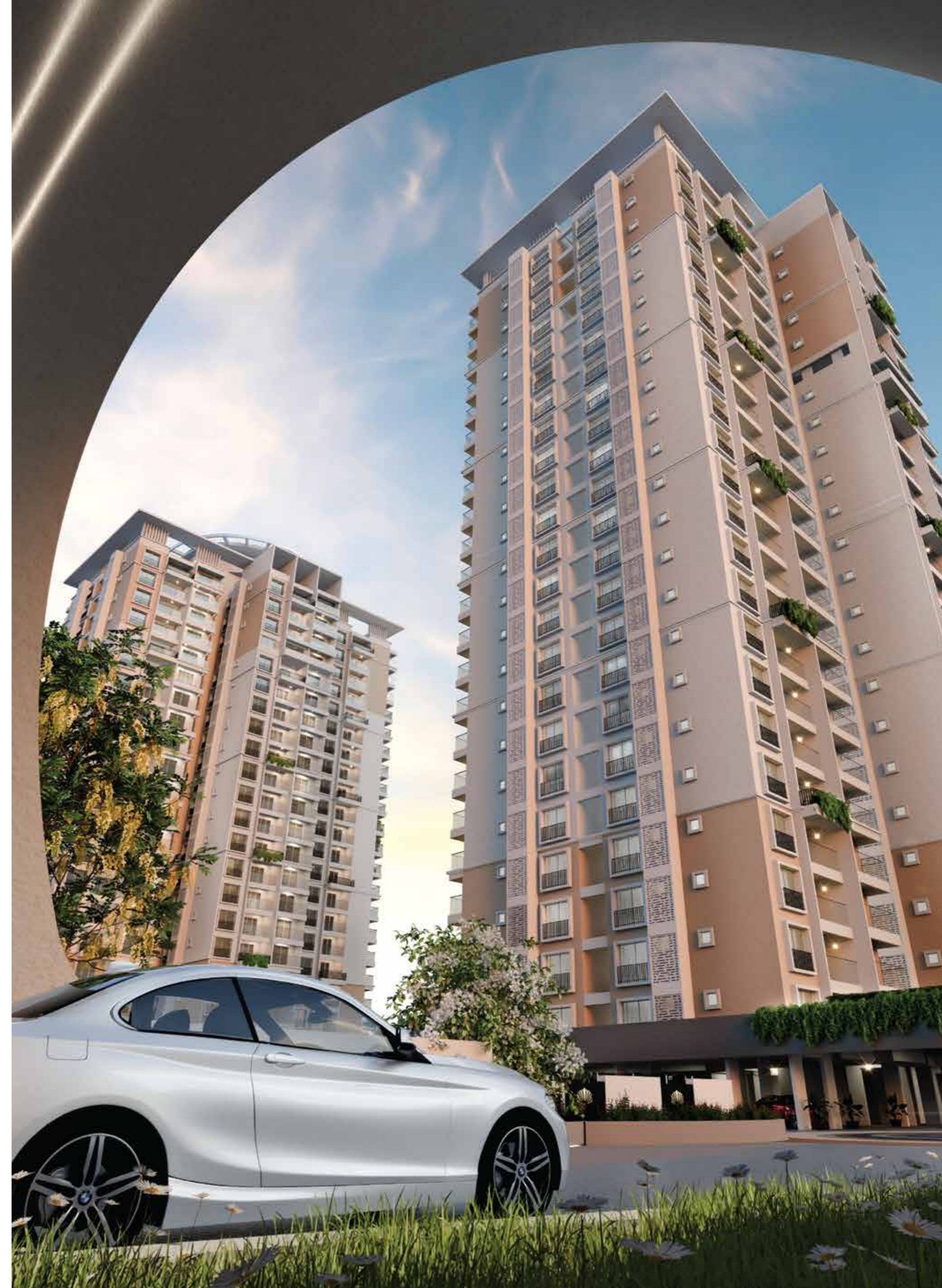
Happy  
Families

1.5M<sub>Sq.Ft</sub>

Successfully  
Delivered

3M<sub>Sq.Ft</sub>

In  
Progress





**A Home**  
Where walls hold nothing  
but the treasures of your  
best memories.

*Over 5000 residents  
live in Sanjeevini Homes*



# Words That Matter

"Buying our flat with Sanjeevini Group was a smooth and hassle-free experience. Their professional team guided us every step of the way, the top-notch construction and luxury amenities exceeded our expectations. We love our new home! "

**Ritika Deshmukh**  
Owner, Sanjeevini Srushti

"Sanjeevini Group helped us secure a prime flat at a great price with complete transparency. Their team handled all legalities, making the process stress-free."

**Pushkar Varma**  
Owner, Sanjeevini Vaibhav

"Our apartment from Sanjeevini Group is a dream come true! Perfect design, seamless customization and great support. Highly Recommended."

**Tarun Halgeri**  
Owner, Sanjeevini Aarna

#### Foundation & Structural Frame

- RCC Foundation and RCC Frame.

#### Super Structure

- Aluminium formwork and Shear wall Technology.
- RCC "Shear wall structural system" is designed to withstand wind and seismic loads as per the relevant IS Codes.
- No common walls.

#### Floor Height

- Residential floor-to-floor height is 3.3 mt.

#### Painting

- Internal walls: Wall putty/POP punning with primer and premium emulsion paint.
- External walls: Weather proof exterior grade paint-apex ultima or equivalent.

#### Railing for Balcony and Specific Windows

- MS railings as per design intent.
- 10 mm toughened glass with MS Handrail and MS Clamp support at the bottom.

#### Doors and windows

- Main door: Factory-made 8' high door with engineered wood frame with veneer and PU Coat.
- Designer Hardware with a smart door lock (Yale/Godrej or equivalent).
- 1-foot-wide window on the side with MS Grill for safety.
- Internal doors: Factory-made 8' high door with engineered wood frame, laminate finish.
- Toilet doors: Factory-made 8' high door with engineered wood frame and laminate finish.
- Front architrave for all doors.
- Acoustic EPDM gasket (for noise reduction) for all doors.
- Sliding door: UPVC frames, energy efficient glass, sliding mosquito mesh of Fenesta/Aparna or equivalent 3 track for dining.
- Slide and fold doors: Manual Glass paned slide and fold doors of UPVC with hardware of reputed make only for 4 BHK.
- Windows: UPVC frames, energy efficient glass, sliding/ casement type with mosquito mesh of Fenesta/Aparna or equivalent 2.5 track with mosquito mesh.
- Ventilators: UPVC Glazed Ventilators with branded Hardware.

#### Toilet

- 600x1200 mm wall Tiles up to false ceiling height.
- 600x600 mm Anti-skid tiles.
- CP fitting of make Artize/Kohler/Grohe.
- Sanitary Fixtures of make Artize/Kohler/Grohe.
- Grip type: False ceiling provision of the Exhaust fan.
- Wall-Hung WC, concealed flush tank, Counter top wash basin and Thermostat with overhead shower and geyser provision.

#### Plumbing

- Water supply lines - CPVC/ PVC of Ashirwad or other reputed ISI make sewage pipe lines - PVC of reputed make.

#### Flooring

- 1200x1200 mm (I marble series) vitrified tiles for the living, dining, kitchen, and bedrooms.
- 200 mm x 1200 mm Anti-Skid tiles in utility, balcony, sit-out.

#### Kitchen

- Provision for water purifier, points, refrigerator, hob, microwave/oven, mixer, and modular chimney in kitchen.
- Provision for washing machine, additional sink & dishwasher (3 BHK luxury & 4 BHK), Instant geyser, sink tap in utility area.

#### Electrical

- TV point in the living room and another two bedrooms.
- Thermostat in master bedrooms only.
- AC point for all bedrooms and the living room.
- Power outlet for VRV-AC system at ODU.

#### Electrical Fittings

- Schneider/Legrand/Anchor Roma switches or equivalent, and partial automation by Schneider or equivalent.
- Provision of telephone + data cabling.
- Schneider or equivalent make distribution boards.
- Rccb incomer with overload & earth leakage protection.
- Electrical cables of ISI brands Havells/Polycab/Kei, or equivalent.

#### Security Systems

- A compound wall of 8' height around the apartment complex with fencing.
- Round the clock (24/7) security with cctv surveillance in common places (inside lift).

#### Generator Backup

- EB Power: 3 BHK Smart - 4 kw, 3 BHK Luxury - 5 kw, 4 BHK Luxury - 6 kw.
- DG Power Backup: 3 BHK Smart-1 kw, 3 BHK Luxury-1 kw, 4 BHK Luxury-1.5 kw & common areas 100% backup for lighting circuits, lifts and utilities.

#### Water

- 24 hours uninterrupted water supply with a sufficient source of bore well and Kaveri water (on availability) water supply system.
- Synchronized with standard automatic system for pumps & amp; motors.
- Dual piping system & dual flush system for sanitary.
- Recycled water is used for landscape irrigation.
- Water-efficient fixtures.
- Groundwater recharge.

#### LPG

- Reticulated Gas Pipeline system for all kitchens.

#### HVAC

- Equipped with an air conditioner of a reputed make with a VRF system.

#### COMMON AREA FEATURES

- Lift: 4-10 pax passenger lift & 1-13 pax service lift. Block of make Mitsubishi, Kone, Toshiba or equivalent make.
- Back-up: 100% power backup for common amenities & common area lighting.
- Lift fascia: Granite cladding.
- Lobby: Granite/marble flooring/vitrified tiles.
- Corridor: Rocker finishing vitrified tiles standard make.
- Staircase floor: Bull nosing step tiles (rubber mould) standard make.
- Staircase handrail: MS handrail with enamel paint on all floors.
- Terrace floor: Heat-insulated waterproofing material of standard make.
- Basement floor: Vdf concrete of 100mm thick with smooth finish over pcc.
- Car Parking: 2 covered car parking for all the flats except for 1500 - 1550 sq. ft flat residents

#### OUTDOOR FEATURES

##### Water storage

- Centralised UG sump with (min. Requirement as per water test report).

##### Rainwater harvesting

- Rainwater harvesting Pits all around the Compound.

##### STP

- Centralised sewage treatment plant standard as per design.

##### Intercom Facility

- All flats.

##### Safety

- Firefighting system as per approved drawings.
- Fire-rated doors at fire escape staircases at required levels.
- Fully equipped firefighting system as per fire norms.
- RFID-based entry and exit system.

##### Walkway

- Walkway spaces are well-defined as per landscape design intent.

##### Landscape

- A Suitable landscape at appropriate places in the project as per design intent.

##### Driveway

- Convex mirror for safe turning in driveway in/out.

##### Water Softener Plant

- Standard make as per design.

##### OWC

- Organic waste convertor with (provision for garbage chute).
- Billing system- Automatic billing system for water, power, gas, and maintenance.
- Water proofing - Water proofing shall be provided for all bathroom's balconies, utility area & terrace.
- Landscape lighting - Automated timer lighting system.

##### Energy Conservation

- Solar water provision for selected units.
- Partial solar power provision for common area lighting energy-efficient lights in a common area.



# A Place Where Life Is Born